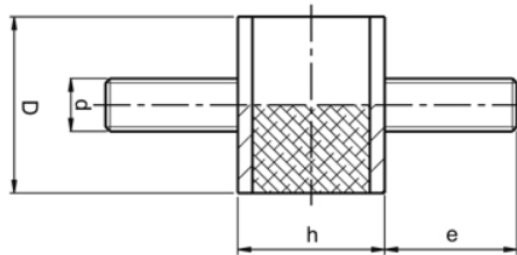


**4121S - Male/Male Anti-vibration Mount - Stainless Steel**

Rubber &amp; Stainless steel

Part Number	D	h	d	e	Cp	Cz
11-AVMM1515SS4	15	15	M4	14	15	2
11-AVMM2015SS6	20	15	M6	16	34	4
11-AVMM2520SS6	25	20	M6	18	45	5
11-AVMM3030SS8	30	30	M8	23	61	7
11-AVMM4030SS8	40	30	M8	23	98	15



\* Cp Maximum load compression (kg)

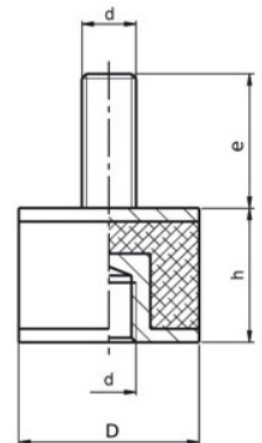
\* Cz Maximum load shear (Kg)

\*\*Available in stainless steel

**4122 - Male / Female Anti-vibration Mount**

Rubber &amp; Zinc Plated Steel

Part Number	D	h	d	e	Cp	Cz
11-AVMF1515S4	15	15	M4	14	15	3
11-AVMF2015S6	20	15	M6	16	34	3
11-AVMF2020S6	20	20	M6	16	29	2
11-AVMF2520S6	25	20	M6	18	45	5
11-AVMF2530S6	25	30	M6	18	35	3
11-AVMF3020S8	30	20	M8	23	66	9
11-AVMF3030S8	30	30	M8	23	61	7
11-AVMF3040S8	30	40	M8	23	54	5
11-AVMF4030S8	40	30	M8	23	98	15
11-AVMF4035S8	40	35	M8	23	88	13
11-AVMF5020S10	50	20	M10	28	169	21
11-AVMF5030S10	50	30	M10	28	159	20
11-AVMF5040S10	50	40	M10	28	144	18
11-AVMF5050S10	50	50	M10	28	134	14
11-AVMF6550S12-37	65	50	M12	37	230	23
11-AVMF7525S12	75	25	M12	37	382	89
11-AVMF7540S12	75	40	M12	37	378	78
11-AVMF7550S12	75	50	M12	37	373	68
11-AVMF10050S16	100	50	M16	45	660	98
11-AVMF10055S16	100	55	M16	45	636	78
11-AVMF10060S16	100	60	M16	45	586	48



\* Cp Maximum load compression (kg)

\* Cz Maximum load shear (Kg)