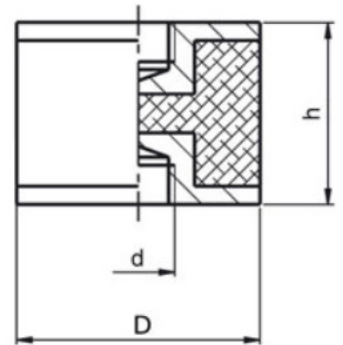


4123 - Female / Female Anti-Vibration Mount

Rubber & Zinc Plated Steel

Part Number	D	h	d	Cp	Cz
11-AVFF1515S4	15	15	M4	15	2
11-AVFF2020S6	20	20	M6	20	2
11-AVFF2520S6	25	20	M6	45	5
11-AVFF2530S6	25	30	M6	35	3
11-AVFF3020S8	30	20	M8	66	9
11-AVFF3030S8	30	30	M8	61	8
11-AVFF3040S8	30	40	M8	54	5
11-AVFF4030S8	40	30	M8	98	15
11-AVFF4035S8	40	35	M8	108	13
11-AVFF5030S10	50	30	M10	169	19
11-AVFF5040S10	50	40	M10	144	17
11-AVFF5050S10	50	50	M10	134	13
11-AVFF6050S10	60	50	M10	200	24
11-AVFF7530S12	75	30	M12	390	90
11-AVFF7540S12	75	40	M12	378	78
11-AVFF7550S12	75	50	M12	373	68
11-AVFF10050S16	100	50	M16	660	98
11-AVFF10055S16	100	55	M16	636	78
11-AVFF10060S16	100	60	M16	590	49

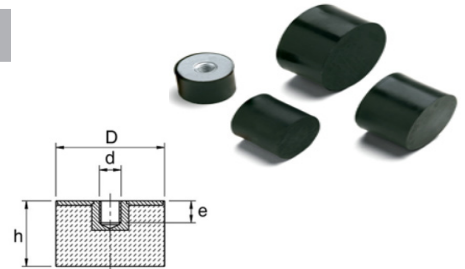


* Cp Maximum load compression (kg)
* Cz Maximum load shear (Kg)

4112 - Sealed End Female Antivibration Mount

Rubber & Zinc plated Steel • Threaded blind hole

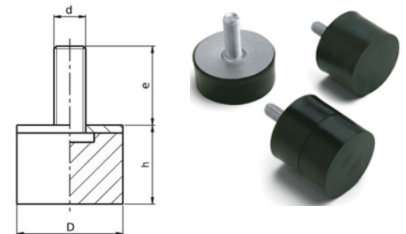
Part Number	D	h	d	e	Cp
11-AVFP2520S6	25	20	M6	6	29
11-AVFP3020S8	30	20	M8	8	42
11-AVFP4030S8	40	30	M8	8	75
11-AVFP5030S10	50	30	M10	10	117



4111 - Sealed End Male Antivibration Mount

Rubber & Zinc Plated Steel

Part Number	D	h	d	e	Cp
11-AVMP2020S6	20	20	M6	16	18
11-AVMP2030S6	20	30	M6	16	16
11-AVMP2515S6	25	15	M6	18	29
11-AVMP2515S6CR	25	15	M6		
11-AVMP2520S6	25	20	M6	18	29
11-AVMP2510S8CR	25	10	M8		
11-AVMP2530S8	25	30	M8	20	29
11-AVMP3040S8	30	40	M8	23	38
11-AVMP4030S8	40	30	M8	23	75
11-AVMP5020S10	50	20	M10	28	117
11-AVMP5050S10	50	50	M10	28	117



*Cp Maximum load compression (kg)

*Cp Maximum load compression (kg)