

Square EPDM Washers

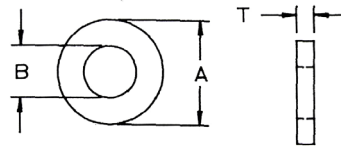
Ex stock and custom sizes available to order

Part Number	Screw Size	ID B	OD A	Thickness T	Colour
12-EPSQ085030	M8	8	50 x 50	3	Black
12-EPSQ105030	M10	10	50 x 50	3	Black
12-EPSQ125030	M12	12	50 x 50	3	Black
12-EPSQ125095	M12	12	50 x 50	9.5	Black
12-EPSQ165030	M16	16	50 x 50	3	Black

Polycarbonate Washers

One of the toughest, most dimensionally stable thermoplastics to cover a wide temperature range

Part Number	Screw Size	ID B	OD A	Thickness T
03-PPW3/5-2.5	M3	3	5	2.5

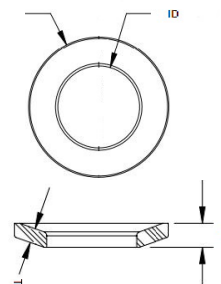


Spring Washers

Excellent spring properties

Designed to eliminate rattles, takes up tolerance variables and provides accurate spacing and tension

Part Number	OD	ID	H	T	Screw Sizes	
03-PNWSP3.5/8	8.03	3.86	1.14	0.69	#6	M3.5
03-PNWSP4/8	7.54	4.39	1.17	0.79	#8	M4
03-PNWSP5/9	9.27	5.18	1.35	0.76	#10	M5
03-PNWSP5/10	10.57	5.97	1.57	0.89	#10	M5
03-PNWSP6/14	14.33	6.71	1.68	0.97	1/14"	M6
03-PNWSP8/17	16.76	8.33	2.03	1.22	5/16"	M8
03-PNWSP10/21	21.54	11.46	2.41	1.40	3/8"	M10



Material: White Acetal

Sealing and Locking Washers

- The unique geometry of these washers creates an interference on the OD of a hex nut & on the ID of the shanks/thread of the screw.
- As the screw is tightened, the OD cold flows around the hex of a nut & the ID cold flows into the threads of the bolt or screw.

Part Number	OD A	T	C	ID B	ID D	Thread	Type
03-PNWS3/7A	7.0	1.4	0.7	3.1	-	#5 M3	A
03-PNWS4/9A	9.0	2.8	1.25	4.2	-	#8 M4	A
03-PNWS4/10A	10.0	3.2	1.5	4.8	4.14	- M4	B
03-PNWS5/10	10.4	3.5	1.4	5.15	-	#10 M5	A
03-PNWS6/12A	12.0	4.0	1.6	6.1	-	- M6	A
03-PNWS6/13B	12.5	2.8	1.5	6.3	4.95	- M6	B
03-PNWS8/16A	15.8	4.6	2.1	8.1	-	5/16" M8	A
03-PNWS8/16B	16.0	3.1	1.6	8.2	7.01	- M8	B
03-PNWS10/20A	19.6	5.3	2.1	10.0	-	3/8" M10	A
03-PNWS14/25A	25.2	5.5	2.5	14.0	-	9/16" M14	A
03-PNWS-R1/4W	19.0	4.5	2.5	13.2	12.2	*R 1/4"	- B
03-PNWS-R1/8W	15.0	4.0	2.0	10.3	9.45	*R 1/8"	- B

Material: Natural Nylon 6/6

