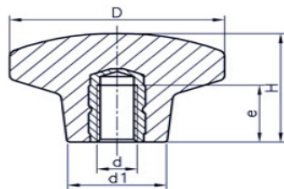


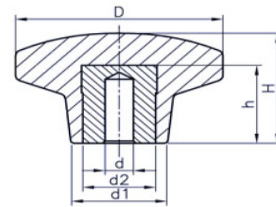
## Knobs - Star - Female

Black Duroplast • Threaded Female Brass Insert • Also available with Treated Steel Insert

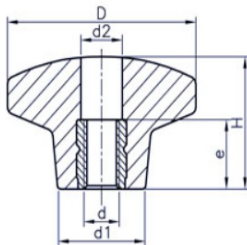
Part Number	D	d2	d4	d5	d6	d8	h1	t4	t5	t6
11-KPD5B20B4	20	-	-	M4	-	10	14	-	-	8
11-KPD5B20B4O	20	-	-	M4	4.3	10	14	6	-	-
11-KPD5B32B6	32	-	-	M6	-	14	20	-	-	10
11-KPD5B32B6O	32	-	-	M6	6.4	14	20	10	-	-
11-KPD5B40B8	40	-	-	M8	-	-	26	-	-	14
11-KPD5B40B8O	40	-	-	M8	8.4	18	26	12	-	-
11-KPD5B40S5	40	12	5.25	-	-	18	26	-	15	-
11-KPD5B40S5O	40	12	5.25	-	8.4	18	26	-	-	14
11-KPD5B50S5	50	14	5.25	-	-	22	32	-	17	-
11-KPD5B50S5O	50	14	5.25	-	10.5	22	32	-	-	17
11-KPD5B63S5	63	16	5.25	-	-	26	38	-	21	-
11-KPD5B63S5O	63	16	5.52	-	13	26	38	-	-	19



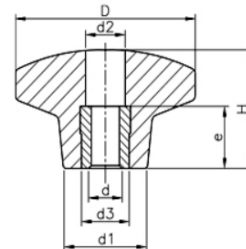
Brass insert – B  
eg. 11- KPD5B20B4



Treated Steel insert – S  
eg. 11- KPD5B40S8



Brass insert open-O  
eg. 11-KPD5B20B4O



Treated Steel insert open – O  
eg. 11- KPD5B40S8O

## Knobs - Star - Male

Black Duroplast • Treated Threaded Steel Stud

Part Number	D	H	d	e	d1
11-KPD5B20S4-15	20	14	M4	15	10
11-KPD5B25S5-20	25	15	M5	20	12
11-KPD5B32S6-20	32	20	M6	20	14
11-KPD5B32S6-40	32	20	M6	40	14
11-KPD5B40S8-27	40	26	M8	27	18
11-KPD5B40S8-47	40	26	M8	47	18
11-KPD5B50S10-44	50	32	M10	44	22
11-KPD5B63S12-40	63	38	M12	40	26

