

## Schurter IEC Low Current Power Inlets

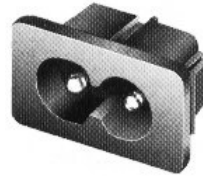
230 Volt 2.5 Amp • 65°C



### Panel Screw Mount

Solder Terminals  
P/N 33-4300.0096

PCB  
P/N 33-4300.0097



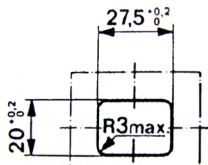
### Snap-in Mount

Solder Terminals  
P/N 33-4300.0098

PCB  
P/N 33-4300.0099

Standards: UL 498, CSA 22.2, EN 60320-1/C8, IEC 320-1/C8  
Approvals (2.5A/250V AC): SEV, VDE, SEMKO, UL, CSA, NEMKO

## Inlets



### Snap-in Mount

1/4" QC 1.5mm Panel

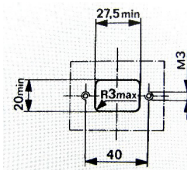
Part No. 33-6100.4315

or Solder Terminals

Part No. 33-6100.4115

10A SEV,VDE,SEMKO 15A UL,CSA

or Part No. 33-10R303B15



### Screw Mount

1/4" QC 1.5mm Panel

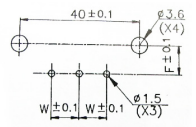
Part No. 33-6100.3300

or Solder Terminals

Part No. 33-6100.3100

10A SEV,VDE,SEMKO 15A UL,CSA

or Part No. 33-10R301B

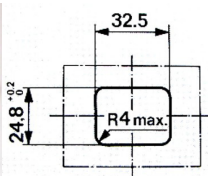


### PCB Mount

Part No. 33-10R307A,B,C  
or D VDE,SEMKO,UL,CSA

PCB Layout	
F	W
A	7.3 7.0
B	7.3 9.1
C	9.7 7.0
D	9.7 9.1

## Outlets



### Snap-in Mount

1/4" QC 1.5mm Panel

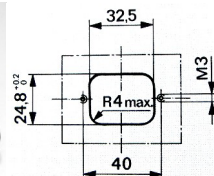
Part No. 33-6600.4315

or Solder terminals

Part No 33-6600.4115

10A SEV,VDE,SEMKO

or Part No. 33-10R308B15



### Screw Mount

1/4" QC

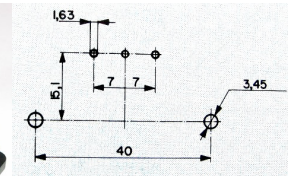
Part No. 33-6600.3300

or Solder terminals

Part No 33-600.3100

15A UL,CSA

or Part No. 33-10R306B



### PCB Mount

Part No. 33-4300.0251

10A SEV,VDE,SEMKO

15A UL,CSA

## Plugs

### Inlets



### Straight Plug

Part No. 33-4732.0000



### Right Angle Plug

Part No. 33-4733.0000

Pin Temp 65 deg. C – 10A 250V AC  
Approvals: SEV, VDE, UL, CSA, BSI  
Standards: EN 60320, IEC 320/E

### Outlets



### Straight Plug

Part No. 33-4782.0000



### Right Angle Plug

Part No. 33-4785.0000

Pin Temp 65 deg. C – 10A 250V AC  
Approvals: SEV, VDE, UL, CSA, BSI  
Standards: EN 60320, IEC 320/E

## Schurter 6200 Series - Inlet & Fuse

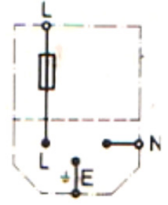
**Screw Mount or Snap-in**  
with shock-safe 1 pole 5x20mm fuse  
holder and spare fuse compartment  
Approvals:



Screw Mnt, 1/4" QC  
Part No. 33-6200.2300



Snap-in, 1.5mm Panel, 1/4" QC  
Part No. 33-6200.4315

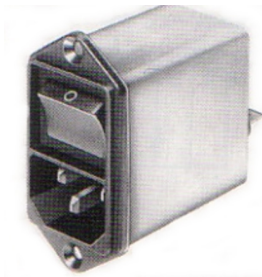


## Schurter KEB II and Schurter KFB II



### Schurter KEB II Inlet & Switch

Screw Mount or Snap-in  
with 2 pole SPST On/Off switch  
non-illuminated or illuminated  
rated at 10 A / 250 V.  
Approvals:  
UL, CSA, VDE, SEV, SEMKO & CS



### Schurter KFB II Inlet, Switch & Filter

Screw Mount.  
with 2 pole SPST On/Off switch and  
an integral mains filter for  
1, 2, 4, 6 or 10A/250V standard and  
medical applications  
Approvals:  
UL, CSA, VDE, SEV, SEMKO & CS

## Schurter KD Series and Schurter CD Series



### Schurter KD Series Inlet, Switch, Fuse & Volts Selector

Screw Mount or Snap-in with shock-  
safe 1 or 2 pole  
5x20mm fuse holder, 2 pole  
10A DPST switch and with or with-  
out 4 position step switch voltage  
selector.  
Approvals:  
UL, CSA, VDE, SEV, SEMKO & CS



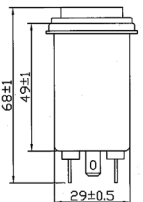
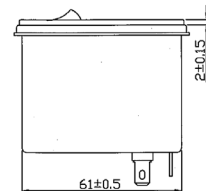
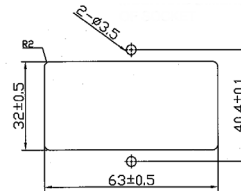
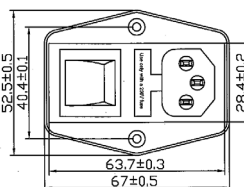
### Schurter CD Series Inlet, Switch, Fuse Filter & Volts Selector

Screw Mount or Snap-in with shock-  
safe 1 or 2 pole  
5x20mm fuse holder, 2 pole  
10A DPST switch and with or with-  
out 4 position step switch voltage  
selector and integral mains filter  
1, 2, 4, 6 or 10A/250V  
standard or medical.  
Approvals:  
UL, CSA, VDE, SEV, SEMKO & CS

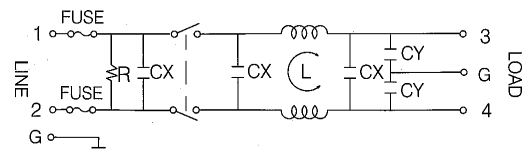
## Inlet, Filter, Switch & Fuse

### Screw mount

Quick connect terminals  
Mains Filter:  
Rated current: 4A @ 250V  
Leakage Current: <0.6mA max @ 250V @ 50Hz  
5x20mm 2pole fuse holder.  
2 pole (DPST) On/Off switch.  
Approvals: UL, VDE  
Typical Insertion Loss (dB): Line to Ground:

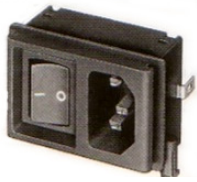


Part Number	0.15 MHz	0.5 MHz	1.0 MHz	5.0 MHz	10 MHz	30 MHz
33-0YQA41	13	21	26	41	42	26



CX : 0.22uF  
CY : 2200pF  
L : 2 x 2.5mH  
R : 1MΩ

## Schurter KP Series and KPF Series



### Schurter KP Series

#### Inlet & Switch

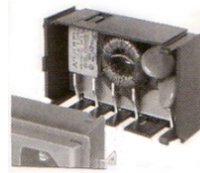
PCB Mount

Appliance Inlet, 1 or 2 pole On/Off Line Switch.

Panel mount from rear.

Approvals:

UL, CSA, 15A 250V AC VDE, SEV, SEMKO 10A 250V AC



### Schurter KPF Series

#### Filter Module

'Backpack' RFI Filter for std or medical app.

Snaps onto KP Module, connection by PCB track. 1, 2, 4, 6, 8 or 10 A.

Approvals:

UL, CSA, VDE

## Schurter PMM Series Multifunctional Module

Low mounting depth • One component • Compact size

Easy snap-in mounting from the inside of the equipment.

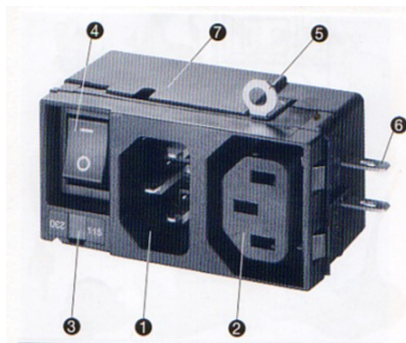
All single elements, excepting the voltage selector, are ready wired on PCB.

Conforms to IEC/EN 60950.

Voltage Selector (optional) as 1-pole On/Off switch for Switch Mode Power Supply.

Approvals:

10A 250V AC UL, CSA, VDE, SEV, SEMKO



1. IEC inlet according to IEC 60320-1/C14.
2. IEC outlet according to IEC 60320-2-2/F.
3. Voltage Selector.
4. On/Off Mains Switch.
5. Ground terminal lug.
6. Combined solder/quick connect terminals.
7. Rear side cover.

## Schurter GRM 4 Series Filtered Module

Multifunctional with optimal EMC-shielding

Time saving 'Lock and Shield' mounting from the inside of the equipment (no pull out risk, no screws).

EMC-shield and EMC ground contact.

One stage EMC filter.

Mains switch 2 pole.

No wiring required.

Rated current up to 10A.

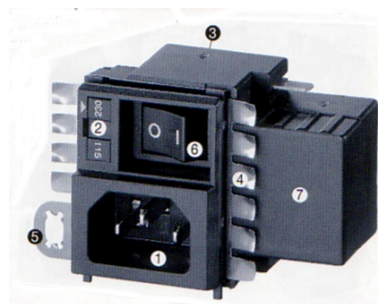
Fuse-holder internal (optional).

Voltage selector switch (optional) for Switch Mode

Power Supplies with 2 input voltage ranges.

Approvals:

10A 250V AC UL, CSA, VDE, SEV, SEMKO



1. IEC inlet according to IEC 60320-1/C14.
2. Voltage Selector (optional) 1 pole On/Off switch.
3. Fuse-holder (optional) internal 2-pole or 1-pole.
4. EMC Shield.
5. EMC ground contact.
6. 2 pole On/Off Mains Switch (1 pole optional).
7. Mains Filter, one stage 0.5, 1, 3, 6 or 10A standard or medical.

## Schurter Combination Modules

Inlet and Circuit Breaker • With or without Mains Filter

Unique compact design. - Pre-wired for easy installation.

Front panel cutout of 72 x 29 mm

Mains Filter: 1 to 10A VDE, Semko, 1 to 15A UL & CSA Standard or Medical

Circuit Breaker: 2 pole On/Off mains switch

Thermal overload protection

Undervoltage release – Remote trip release



**5145 Series**  
Inlet, Circuit Breaker  
and mains filter.



**6145 Series**  
Inlet and Circuit  
Breaker

**Ask for full details on these and many other quality Schurter products.**

## IEC Inlet/filters

With increasing RFI and induced interference it is important to protect the integrity of your equipment or system. Reduce your line to ground (common mode) interference.

It need not cost a lot with this range of filters. Quick Connect terminals available.

These filters meet low leakage requirements operating on mains voltages 115-250vAC 50/60 Hz.

They are compact and are easily mounted. Safety and construction are in compliance USA, Canadian & European standards.



33-1001,3,6,10AFS



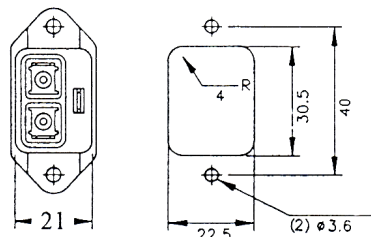
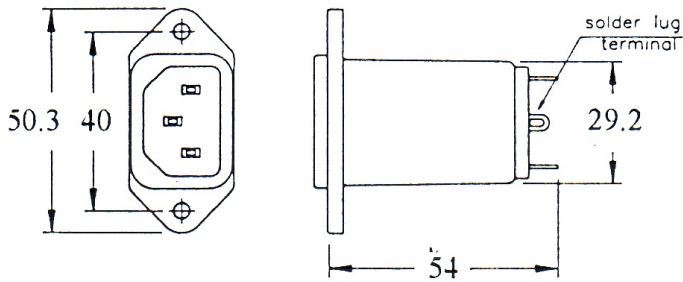
33-0YA01T3,03T3



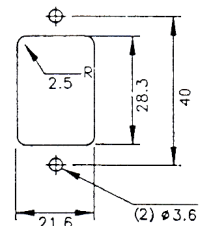
33-0YO06T1-AU



33-0YB01A1, 06A1



Back of panel



Front of panel

## Specifications

Typical Insertion Loss (dB): Line to Ground (50 ohm)

Part Number	Current Rating	0.15 MHz	0.5 MHz	1.0 MHz	5.0 MHz	10 MHz	30 MHz
33-1001AFS	1A	20	33	40	45	47	50
33-1003AFS	3A	15	25	30	45	50	53
33-1006AFS	6A	10	20	25	42	45	50
33-1010AFS	10A	8	15	20	38	40	45
33-0YB01A1	1A	28	38	41	39	39	41
33-0YB06A1	6A	14	22	27	38	42	47
33-0YO06T1-AU*	6A	6	16	21	38	42	43
33-0YA01T3	1A	36	55	40	40	40	30
33-0YA03T3	3A	24	36	40	48	48	34

\*Snap In Mount

T3 & AFS - Solder Terminals

A1 - 1/4" Quick Connect

Rated Voltage : 115/250 vAC 50/60 Hz

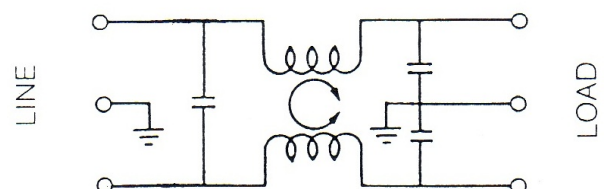
Maximum Leakage Current : Line to Ground @ 250v 50 Hz 0.8 mA

Test Voltage :

Line to Ground 2250vDC 1 minute

Line to Line 1450vDC 1 minute

## Electrical Schematic

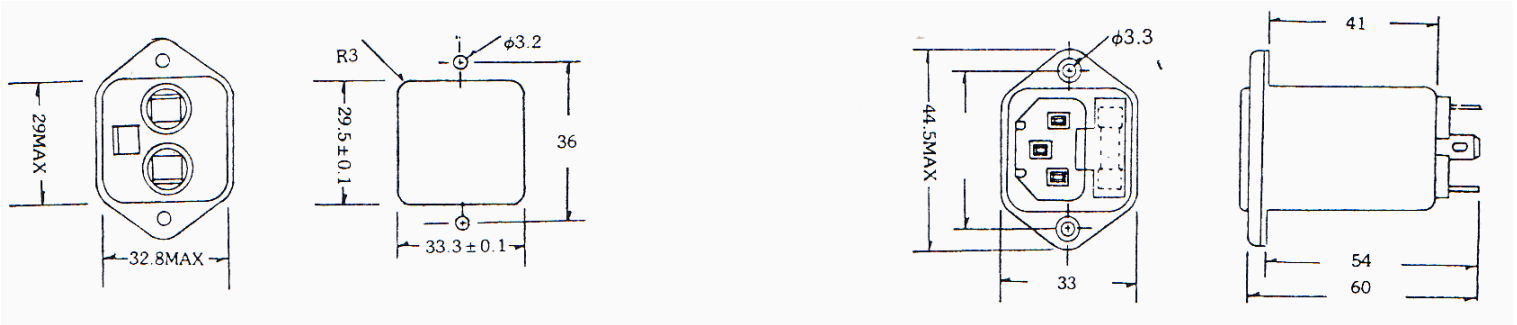


## IEC Inlet/Fuse/Filters

Compact IEC Inlet / Filter module including one fuseholder plus clip for spare and an IEC Inlet.

Safety interlock prevents fuse removal with line plug inserted.  
Easy mounting 6.3mm Quick Connect Terminals

UL, CSA, VDE, SEMKO, FIMKO, NEMKO & DEMKO Recognition.



### Specifications

Typical Common Mode Attenuation (dB):

Part Number	Current Rating	0.15 MHz	0.5 MHz	1.0 MHz	5.0 MHz	10 MHz	30 MHz
33-OYL03T1	3A	32	42	48	50	51	44
33-OYL10T1	10A	15	24	27	42	52	44

Rated Voltage: 115/250 vAC 50/60 Hz

Operating Temperature: -25°C to 85°C

Leakage Current: 0.8mA max.

Test Voltage:

Line to Line 1450vDC 1 minute  
Line to Ground 2250vDC 1 minute

Insulation Resistance: 100 M\* Min 250V DC

D.C Resistance: 0.2 max \* (OYL03T1)

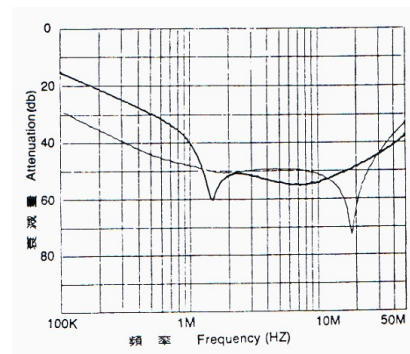
0.1 max \* (OYL10T1)

Temperature Rise: 30°C Max.

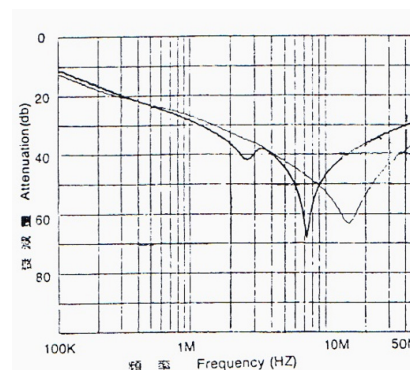
Normal Mode: \_\_\_\_\_

Common Mode: \_\_\_\_\_

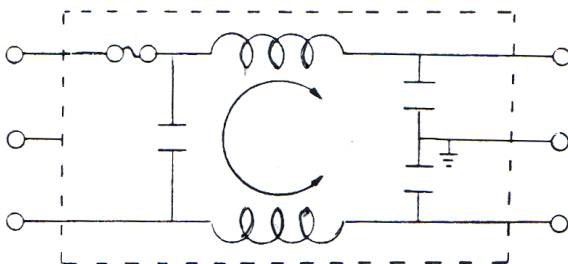
#### OYL03T1



#### OYL10T1



### Electrical Schematic



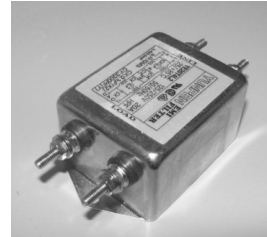
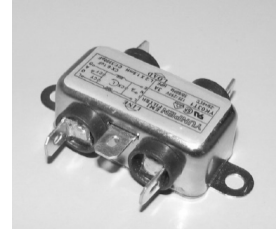
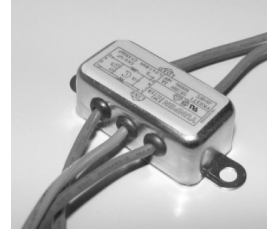
## Mains Line Filters

Designed to suppress line-to-ground and line-to-line interference. Enclosed in metal case.

The 0YK and AA Series are single stage filters for cost sensitive applications.

Where a higher level of filtering is required the 0YE Series offers a 2 stage filter for high insertion loss plus low leakage current.

Safety and construction are in compliance USA, Canadian & European standards.



Dimensions	A	B	C	D	E
33-0YK01T1-WIRE	32	44	18	53.5	63.5
33-1001AAS	53.4	45.9	16.7	54.1	64.2
33-0YK03T1-WIRE	32	44	18	53.5	63.5
33-0YK03T1	48	44	18	53.5	63.5
33-0YK10T1-WIRE	32	44	18	53.5	63.5
33-0YK10T1	48	44	18	53.5	63.5
33-0YET05T1L2	90	52	38	75	85
33-0YE10T1L2	90	52	38	75	85
33-0YE20T4L2	105	52	38	75	85

### Specifications

Typical insertion loss (dB): live to ground in 50ohm system

Part Number	Current Rating	0.15 MHz	0.5 MHz	1.0 MHz	5.0 MHz	10 MHz	30 MHz
33-1001AAS	1A	15	30	38	50	50	50
33-0YK01T1	1A	26	35	38	41	41	37
33-0YK03T1	3A	21	27	32	39	39	42
33-0YK10T1	10A	7	16	21	35	41	36
33-0YE05T1L2	5A	53	84	70	58	53	51
33-0YE10T1L2	10A	26	63	76	66	62	42
33-0YE20T4L2	20A	14	39	49	63	59	38

Suffix - WIRE - Leads; T1 & S - 1/4" QC Terminals

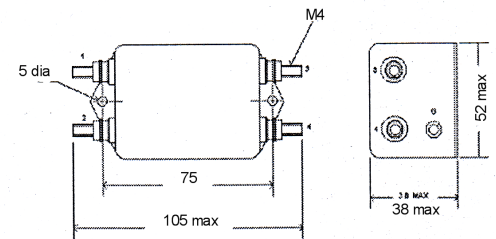
Note : 33-0YE20T4L2 is M4 screw terminals

**Rated Voltage:** 115/250 V AC 50/60 Hz

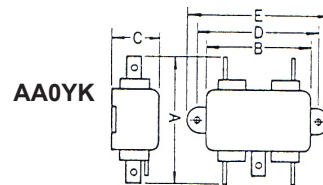
**Maximum Leakage Current :** **AA** **0Y/YE**  
Line to Ground @ 250v 50 Hz 0.5mA 0.8mA

### Test Voltage:

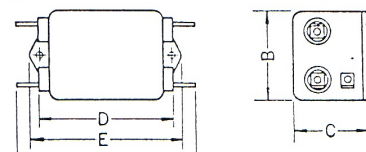
Line to Ground 2250vDC 1 minute  
Line to Line 1450vDC 1 minute



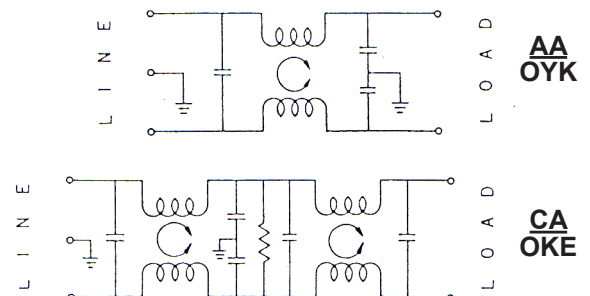
### 33-0YE20T4I2



### 0YE



### Electrical Schematic

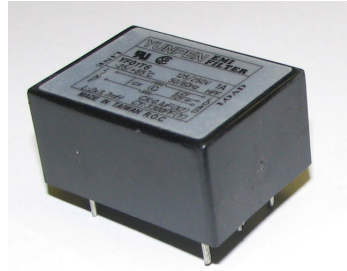
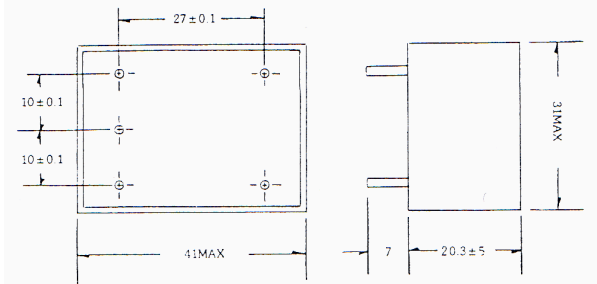


## PCB Line Filters

Low cost labour saving PCB Design.

UL, CSA Recognition

Leakage current of 0.8 mA Max.



### Specifications

Typical Common Mode Attenuation (dB):

Part Number	Current Rating	0.15 MHz	0.5 MHz	1.0 MHz	5.0 MHz	10 MHz	30 MHz
33-OYF01T6	1A	38	55	52	49	54	36
33-OYF03T6	3A	27	36	41	41	43	32

**Rated Voltage:** 115/250 vAC 50/60 Hz

**Operating Temperature:** -25°C to 85°C

**Leakage Current:** 0.8mA max.

**Test Voltage:**

Line to Line 1450vDC 1 minute

Line to Ground 2250vDC 1 minute

**Insulation Resistance:** 1000 MΩ Min 250V DC

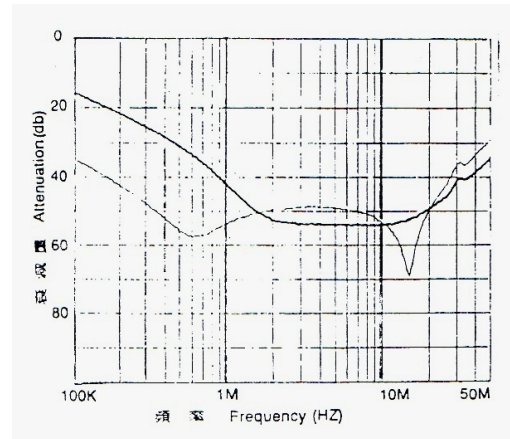
**Direct Current Resistance:** 0.5 Ω (OYF01T6)  
0.2 Ω (OYF03T6)

**Temperature Rise:** 35°C Max.

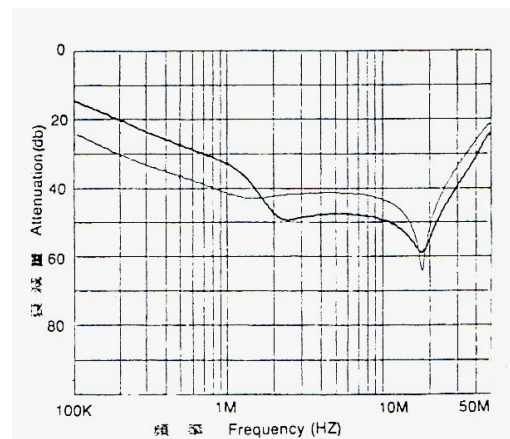
**Normal Mode:** \_\_\_\_\_

**Common Mode:** \_\_\_\_\_

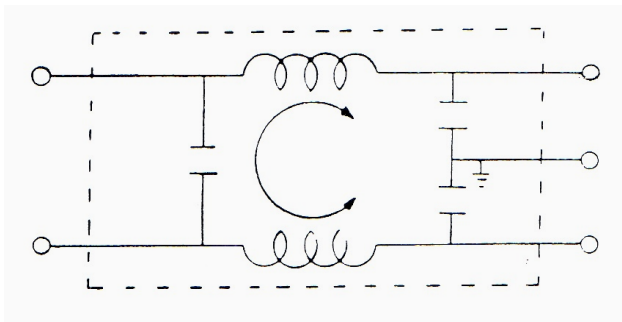
### OYF01T6



### OYF03T6



### Electrical Schematic

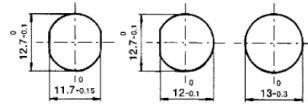


## Schurter FPG 1 Series

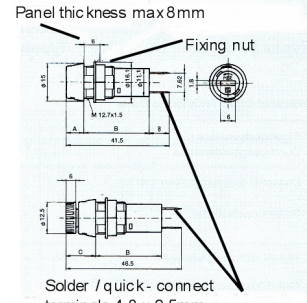
Front Panel Screw Mount - General Purpose Models.



- Part No. 31-010015 Fingergrasp/Bayonet Cap
- Part No. 31-010010 Screwdriver Slot/Bayonet Cap



Panel mounting holes /



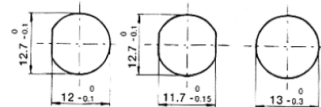
5x20mm

## Schurter FPG 2 Series

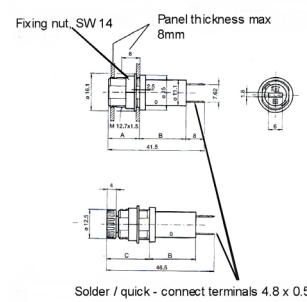
Rear Panel Screw Mount - Allows cost saving prewiring.



- Part No. 31-010025 Fingergrasp/Bayonet Cap
- Part No. 31-010020 Screwdriver Slot/Bayonet Cap



Panel mounting holes /



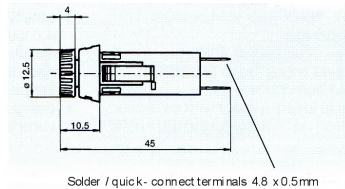
5x20mm

## Schurter FPG 3 Series

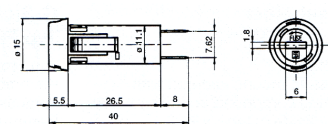
Snap-in Front Panel Mount - Easy fit for time saving operation.



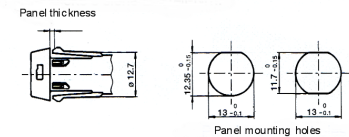
- Part No. 31-010035 Fingergrasp/Bayonet Cap for 1.0 - 1.8mm panel thicknesses
- Part No. 31-010036 Fingergrasp/Bayonet Cap for 2.0 - 3.0mm panel thicknesses
- Part No. 31-010030 Screwdriver Slot/Bayonet Cap for 1.0 - 1.8mm panel thicknesses
- Part No. 31-010031 Screwdriver Slot/Bayonet Cap for 2.0 - 3.0mm panel thicknesses



Solder / quick - connect terminals 4.8 x 0.5mm



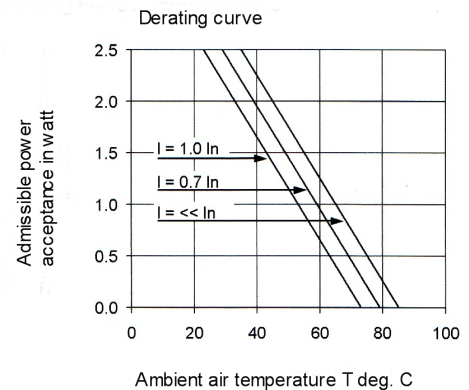
5x20mm



Panel mounting holes

## Technical Data

- Rated Voltage: 250 V
- Rated Current: 10 A to SEV, VDE, SEMKO  
16 A to UL, CSA
- Contact Resistance: < 5 mΩ at 20mV
- Ambient Temperature: -25°C to +85°C
- Degree of Protection: - IP40 (IP67 available FPG1 & 2)  
Holder complete from the front side
- Materials: Body - PBTP Thermoplastic  
Live Parts - Corrosion proof copper alloy





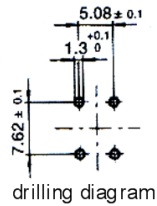
### Schurter FPG 4 Series

Vertical 5x20mm PCB Mount • Saves space on PCB

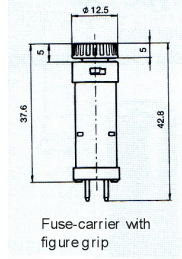


Fingerrip / Bayonet Cap  
Part No. 31-010045

Screwdriver Slot / Bayonet Cap  
Part No. 31-010040



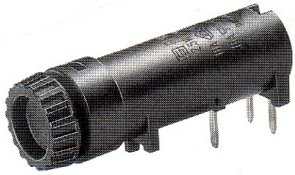
drilling diagram



Fuse-carrier with figure grip

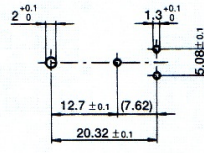
### Schurter FPG 5 Series

Horizontal 5x20mm PCB Mount • Secure fixing

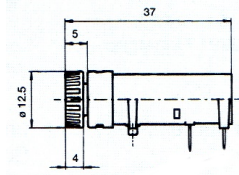


Fingerrip / Bayonet Cap  
Part No. 31-010055

Screwdriver Slot / Bayonet Cap  
Part No. 31-010050



Drilling diagram

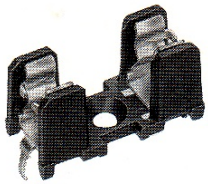


Fuse carrier with finger grip

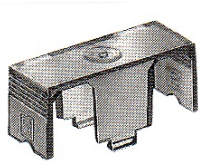
### Schurter OGN 5x20mm Open PCB Mnt

10A 250v

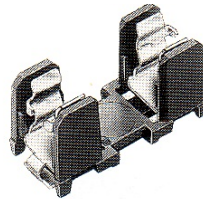
OG 5x20mm Clip



Low profile fuse block with insulation walls. Through hole mounting.



Cover



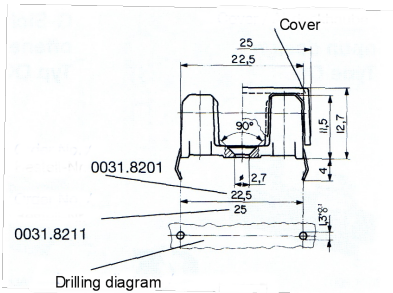
Surface mounting type suitable for reflow and vapour phase soldering



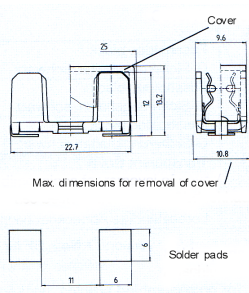
PCB Mount – 10A – 250V Kicked Terminals  
Material: Brass, Tin Plated



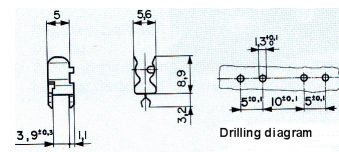
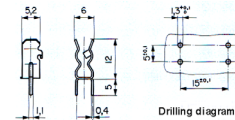
0751.0110  
0751.0062



Part No. 31-8201 22.5mm Pitch  
Part No. 31-8211 25.0mm Pitch



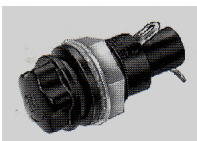
Part No. 31-8221 SMD Type  
Part No. 31-0853.0551 Cover



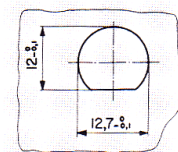
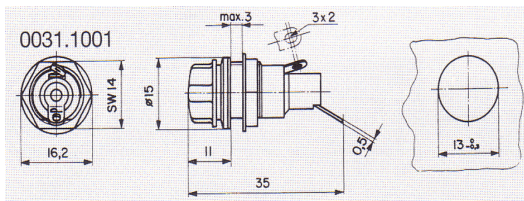
Part No. 31-0751.0110 In Line Pins  
Part No. 31-0751.0062 Side Mounted Pins

### Schurter FEP 5x20mm Panel mount

Compact applications – rear clearance of only 21mm



Part No. 31-1001



## FSF Quick Acting - Low Breaking Capacity (Std Fuse)

A quality fusible link for most applications. IEC127 Standard.

Breaking Capacity : 35A / 250v / 50Hz / p.f. 1

Sizes 5x20mm : 2 mA to 10 A / 250v

Part Nos. 34-1501 / 1526

6.3x32mm : 100mA to 10 A / 250v

Part Nos. 34-1736 / 1756



## SP Quick Acting F - High Breaking Capacity

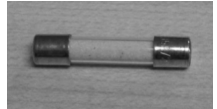
Breaking Capacity : 1500 A / 250v / 50Hz / p.f. 0.7 - 0.8 >6.3A 500A/250v

Sizes 5x20mm : 500mA to 16 A / 250v

Part Nos. 34-001.1001 / 1016

6.3x32mm : 500mA to 20 A / 250v

Part Nos. 34-001.1021 / 1037



## FST Slow Blow (Time Lag) T - Low Breaking Capacity

For high inrush or transient loads.

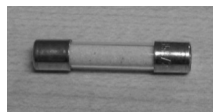
Breaking Capacity : 35A / 250v / 50Hz / p.f. 1

Sizes 5x20mm : 20 mA to 20 A / 250v

Part Nos. 34-3101 / 3130

6.3x32mm : 20mA to 20 A / 250v

Part Nos. 34-3401 / 3430



## SPT Slow Blow (Time Lag) T - High Breaking Capacity

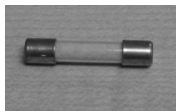
Breaking Capacity : 1500A / 250v / 50Hz / p.f. 0.7 - 0.8 >6.3A 500A/250v

Sizes 5x20mm : 500mA to 16 A / 250v

Part Nos. 34-001.2501 / 2516

6.3x32mm : 500mA to 32 A / 250v

Part Nos. 34-001.2521 / 2539



## SA Super Quick Acting FF - High Breaking Capacity

Breaking Capacity is defined as the maximum current the fuse is able to interrupt at its rated voltage. In the event of a fault an inadequate breaking capacity can result in a persistent arc causing serious damage.

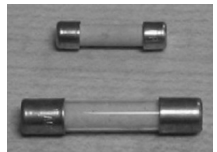
Breaking Capacity : 1500A / 250v / 50Hz / p.f. 0.7 - 0.8 (500A 4-to 10A)

Sizes : 5x20mm : 1.6 A to 10 A / 250v

Part Nos. 34-0903 / 0911

6.3x32 : 1.6 mA to 16 A / 250v

Part Nos. 34-1001 / 1012



## MSA Axial Lead (Pico) and Quick Acting F 125V

### MSA Axial Lead (Pico)

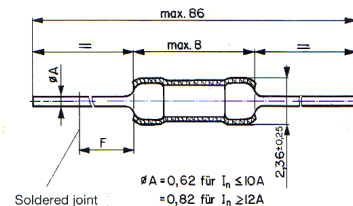
Part Number	Rating A
34-4807	.0625
34-4810	.125
34-4813	.250
34-4815	.375
34-4817	.500
34-4820	.750
34-4822	1
34-4824	1.5
34-4826	2

### Quick Acting F 125V

Part Number	Rating A
34-4827	2.5
34-4828	3
34-4831	4
34-4832	5
34-4833	7
34-4834	10
34-4835	12
34-4836	15

### UL/CSA

Breaking Capacity : 300A/125v  
>10A 300A/32v



## MSF Microfuse - Quick Acting

Pluggable into sub-miniature fuseholder or directly mountable on printed circuit boards.

### MSF 125v

100mA to 5 A

Part Nos. 34-4206/4228

UL, CSA



### MSF 250v

50 mA to 5 A

Part Nos. 34-6000/6021

UL, SEV, VDE-Mark, SEMKO-



## MST 250v Microfuse - Time Lag

Pluggable into sub-miniature fuseholder or directly mountable on printed circuit boards.

Available in sizes 63mA to 4 A / 250v.

Part Nos. 34-6602 / 6623

Breaking Capacity : 35 A or 10. In / 250v AC (p.f. 1) according to IEC 127-3/4



## Resettable PTC Fuses

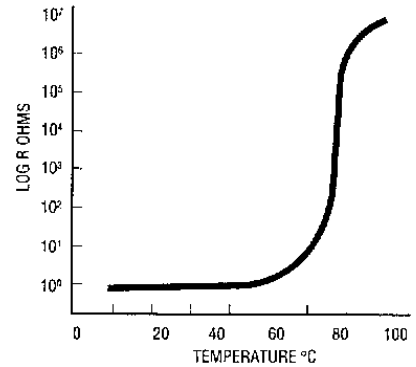
Schurter Polymeric Positive Temperature Coefficient (PPTC) fuses enable convenient protection of low voltage supplies, with the advantage of reset.

At normal temperature there are numerous carbon chains forming conductive paths through the device.

Under fault conditions, I<sup>2</sup>R heating causes the carbon chains to be pushed apart, with most of them no longer conducting current and the resistance of the device increases sharply (see Fig. 1).

The PPTC remains latched, providing continuous protection, until the fault is cleared and the power is removed.

Reversing the phase transformation allows the carbon chains to reform as the polymer re-crystallizes. The resistance quickly returns to its original value.



### Surface Mount

Part Nos. 34-PFMC.020.2 / 110.2  
34-PFSM.030.2 / 260.2



#### FEATURES:

- SMD
- Fully compatible with industry standards
- Packaged per EIA 481-2 standard
- UL, TUV & CSA (pending)
- Rated 6 - 30 volts
- I break to 40 amps

#### APPLICATIONS:

- Computer & Peripherals
- Computer Cards
- Automotive applications
- General Electronic

### Radial Leaded

Part Nos. 34-PFRA.010.x / 900.x  
34-PFRX.110.x / 375.x



#### FEATURES:

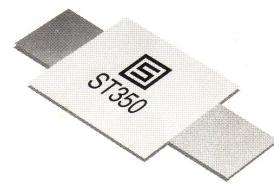
- Insulating Material UL94V0
- T+R and Ammo-Pak
- UL, TUV & CSA
- Rated 30 - 60 volts
- I break to 40 amps

#### APPLICATIONS:

- Security Systems
- Motors/fans
- Loud speakers
- Power Transformers
- Computer & peripherals
- Automotive
- General Electronic

### Strap

Part Nos. 34-PFST.120 / 420  
34-PFLT.100 / 340



#### FEATURES:

- Fully compatible with industry standards
- Weldable nickel terminals
- Very low internal resistance
- UL, TUV & CSA (pending)
- Rated 15 - 30volts
- I break to 100 amps

#### APPLICATIONS:

- Battery Packs
- Cell phones
- Lap-Tops

## Schurter SMT Fuses - Quick Acting - Surface Mount

### OMF 63v

100mA to 5 A  
Part No. 34-02.0003 / 0040.xx

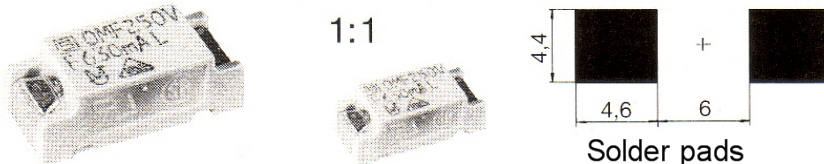
Available in loose pieces or taped and reeled 750 pieces.  
UL, CSA



### OMF 250v

400 mA to 4 A  
Part No. 34-03.0010 / 0022.xx

Available in loose pieces or taped and reeled 2000 pieces.  
UL



## Low Profile Wire Protector Style - Miniature

A range of top quality terminal blocks at prices which can mean savings for you.

2 & 3 Pole Modular Interlocking Housing: Polyamide 66 Green (UL94V0)

Wire Guard: Phosphor Bronze Nickel Plated

Voltage Rating: 300V

Approvals: UL, VDE, CE

### Vertical



32-DED350V-2P



32-DT126VP-3P



32-DED508V-2P

Part Number	Poles	Pitch mm	Max Current	Max mm <sup>2</sup>
32-DED350V-2P	2	3.5	10A	1.5
32-DED350V-3P	3	3.5	10A	1.5

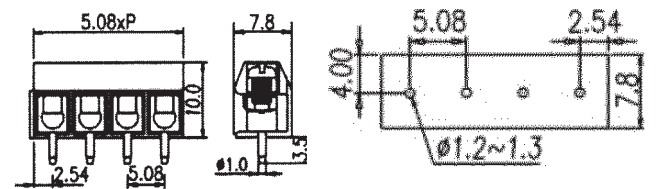
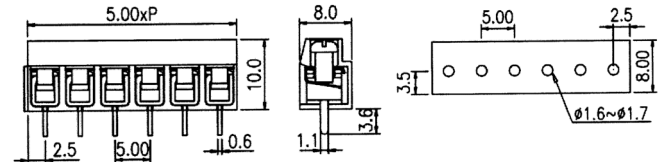
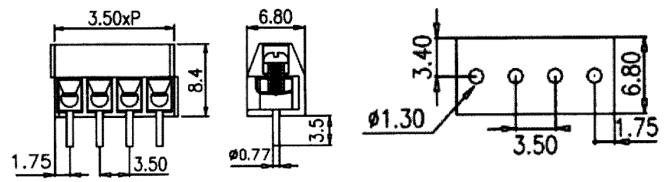
Screws M2 Combination  
Torque 2 lb-in

Part Number	Poles	Pitch mm	Max Current	Max mm <sup>2</sup>
32-DT126VP-2P	2	5.0	8A	1.5
32-DT126VP-3P	3	5.0	8A	1.5

Screws M2.5 Combination  
Torque 4.4 lb-in

Part Number	Poles	Pitch mm	Max Current	Max mm <sup>2</sup>
32-DED508V-2P	2	5.08	8A	1.5
32-DED508V-3P	3	5.08	8A	1.5

Screws M2.5 Combination  
Torque 3.5 lb-in



### Right Angle



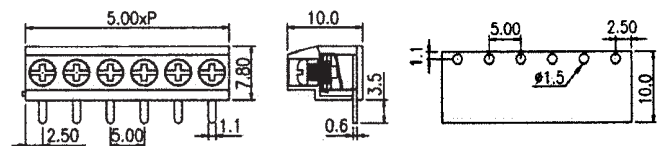
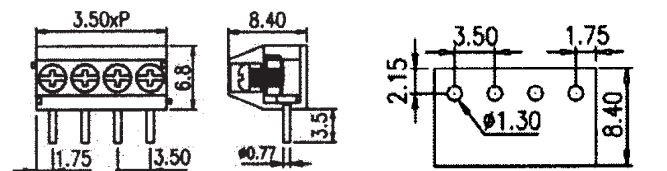
32-DT126RP-3P

Part Number	Poles	Pitch mm	Max Current	Max mm <sup>2</sup>
32-DED350R-2P	2	3.5	10A	1.5
32-DED350R-3P	3	3.5	10A	1.5

Screws M2 Combination  
Torque 2 lb-in

Part Number	Poles	Pitch mm	Max Current	Max mm <sup>2</sup>
32-DT126RP-2P	2	5.0	8A	1.5
32-DT126RP-3P	3	5.0	8A	1.5

Screws M2.5 Combination  
Torque 4.4 lb-in



## Elevator Clamp Type

for secure repeatable connection

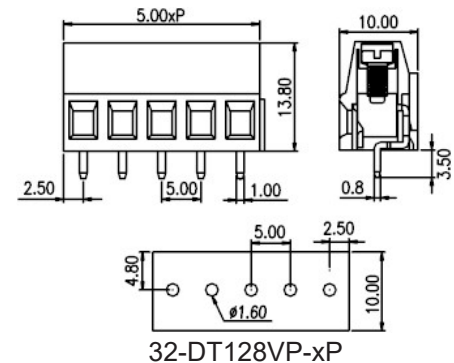
2 & 3 Pole Modular Interlocking Housing: Polyamide 66 Green (UL94V0)

Approvals: UL, VDE, CE

### DT128V & DEK508 Series

Vertical - Max Volts 300V

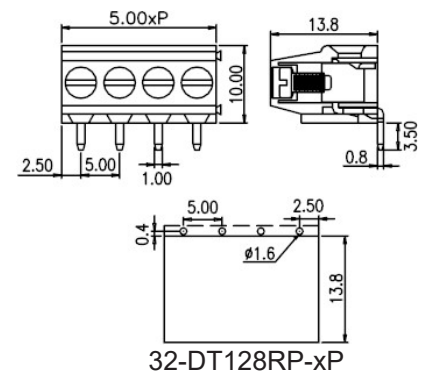
Part Number	Poles	Pitch mm	Max Current	Max mm <sup>2</sup>
32-DT128VP-2P	2	5.0	20A	2.5
32-DT128VP-3P	3	5.0	20A	2.5
32-DEK508V-2P	2	5.08	20A	2.5
32-DEK508V-3P	3	5.08	20A	2.5
32-DT128VP-2P3	2	7.5	20A	2.5
32-DT128VP-3P3	3	7.5	20A	2.5



### DT128R Series

Right Angle - Max Volts 300V

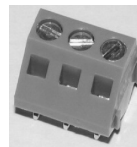
Part Number	Poles	Pitch mm	Max Current	Max mm <sup>2</sup>
32-DT128RP-2P	2	5.0	20A	2.5
32-DT128RP-3P	3	5.0	20A	2.5
32-DT128RP-2P3	2	7.5	20A	2.5
32-DT128RP-3P3	3	7.5	20A	2.5



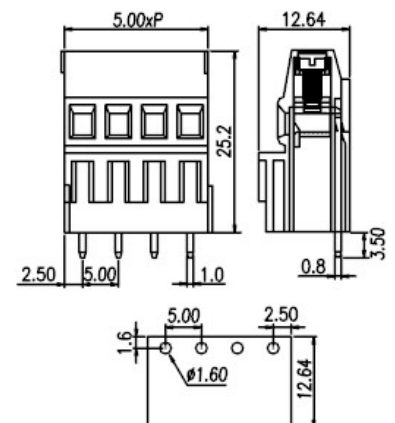
### DT103 Series

45° Entry - Max Volts 300V

Part Number	Poles	Pitch mm	Max Current	Max mm <sup>2</sup>
32-DT103-2P	2	5.0	10A	2.5
32-DT103-3P	3	5.0	10A	2.5



32-DT103-XP



Screws M2.5 Combination

## Bi-Level Elevator Clamp Type

### Dual Vertical

Use with 32-DT128VP series

Approvals : UL , VDE, CE

2Px2 & 3Px2 Modular Interlocking

Pins: 0.8 x 1.0mm

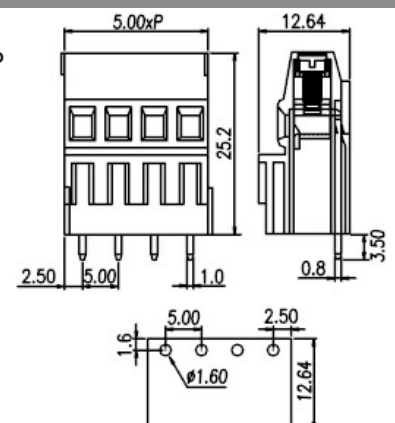
Housing: Polyamide 66 Green (UL94V0)

### DEEK500V Series - Max Volts 300V

Part Number	Poles	Pitch mm	Max Current	Max mm <sup>2</sup>
32-DEEK500V-2P	4	5.0	20A	2.5
32-DEEK500V-3P	6	5.0	20A	2.5



32-DEEK500V-3P



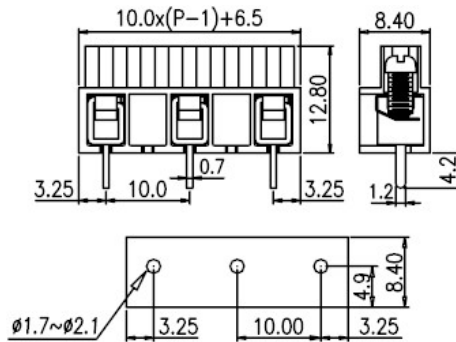
Screws M2.5 Combination

## High Voltage Wire Protector Type

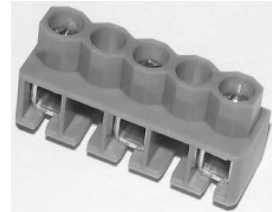
DT166 Series - Vertical

Approvals: UL, VDE  
12A/4.0mm/380VAC  
Pins: 0.8 x 1.0mm  
Housing: Polyamide 6/6 Green (UL94V2)  
Screws M3 Combination

Part Number	Poles	Pitch mm	Max Current	Max mm <sup>2</sup>
32-DT166-2P5	2	10.0	12A	4
32-DT166-3P5	3	10.0	12A	4



10mm Pitch

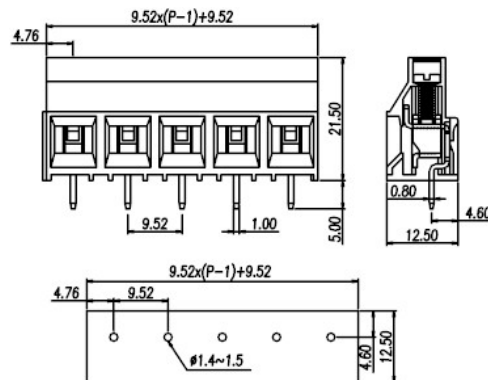


## 30A Elevator Clamp Type

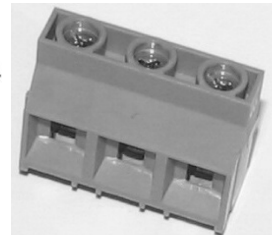
EK950V Series - Vertical

Approvals: UL, TUV  
2 & 3 Pole Modular Interlocking  
30A/45.0mm<sup>2</sup> / 300VAC  
Pins: 0.8 x 1.0mm  
Housing: Polyamide 6/6 Green (UL94V2)  
Screws M3 Combination

Part Number	Poles	Pitch mm	Max Current	Max mm <sup>2</sup>
32-DEK950V-2P	2	9.52	30A	4
32-DEK950V-3P	3	9.52	30A	4



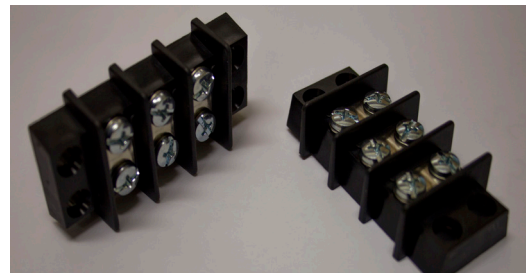
9.52mm Pitch



## Screw Mount Terminal Block

Barrier Terminal Block Double row 3 Way

Barrier terminal blocks, screw connection 600V  
Panel mounting  
Material:  
Insulation - PBT  
Conductor - Copper Alloy  
Plating - Tinned



Part Number	Rating	Wire	Screw Thread
32-D0113-1003	35A	14.3mm	M4

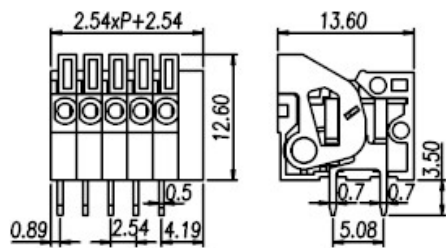
## Fast Connection - Screwless Spring Type

### DT141 and DT142 Series Pitch 2.54mm and 5.08mm Vertical and Horizontal entry

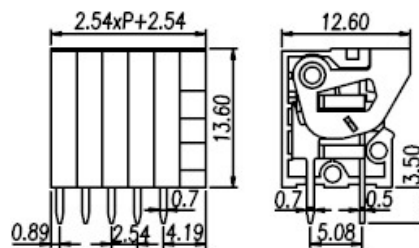
Insert and release wires using a screwdriver in the slot  
Terminals and solid wires can be inserted directly without the assistance of the lever.

Part Number	Poles	Pitch mm	Max Current	Max mm <sup>2</sup>
32-DT141V-xxP	2 to 24	2.54	4A	0.5
32-DT141R-xxP	2 to 24	2.54	4A	0.5
32-DT142V-xxP	2 to 24	5.08	10A	2.5
32-DT142R-xxP	2 to 24	5.08	10A	2.5

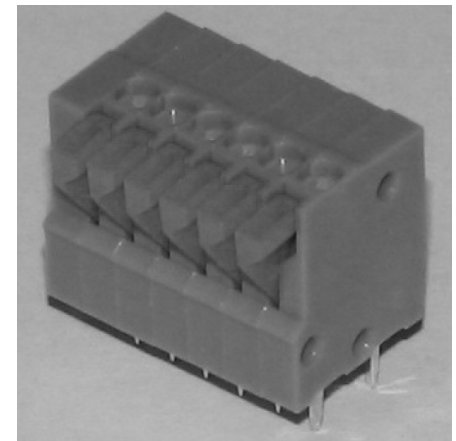
Where xx is the number of poles



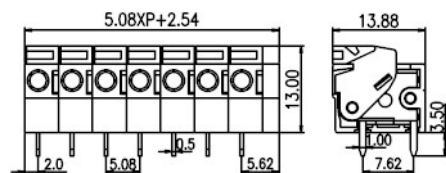
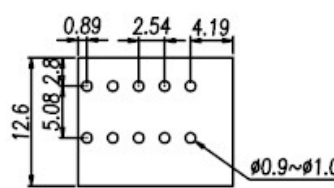
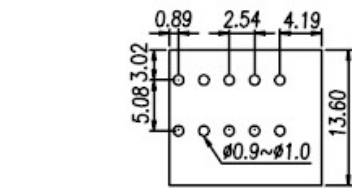
32-DT141R-07P



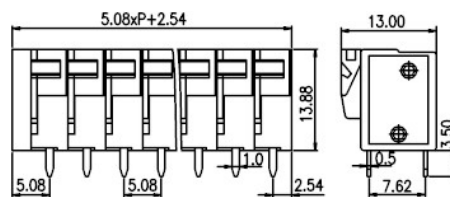
32-DT141V-05P



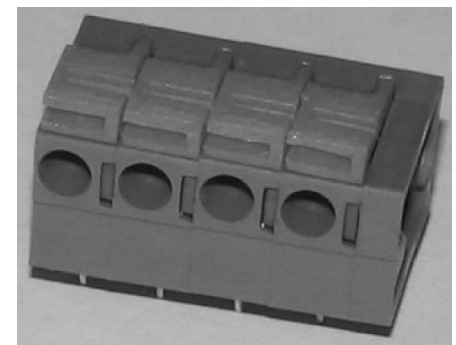
32-DT141V-06P



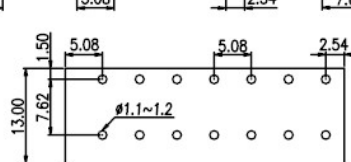
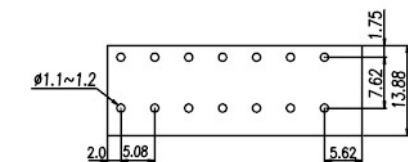
32-DT142R-07P



32-DT142V-07P



32-DT142R-04P



## Fast Connection - Screwless Spring Type

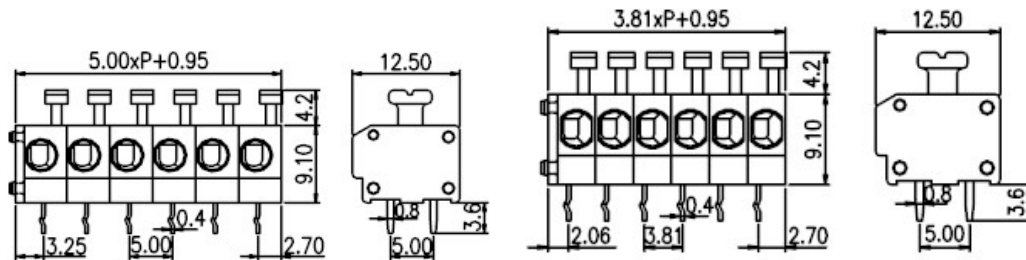
DT144RA Series - Pitch 3.81mm, 3.96mm, 5.0mm & 7.5mm

Insert and release wires with no tools

Terminals and solid wires can be inserted directly without the assistance of the lever.

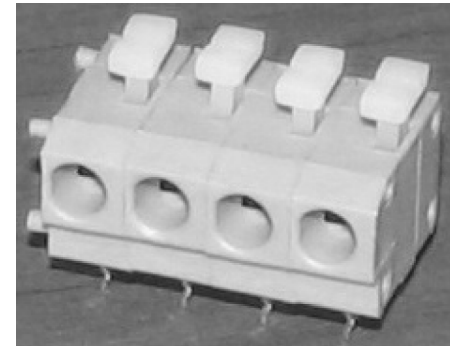
Part Number	Poles	Pitch mm	Max Current	Max mm <sup>2</sup>
32-DT144RA-xxP	2 to 24	5.0	10A	2.5
32-DT144RA-xxP1	2 to 24	3.81	10A	1.5
32-DT144RA-xxP2	2 to 24	3.96	10A	1.5
32-DT144RA-xxP3	2 to 24	7.5	10A	2.5

Where xx is the number of poles

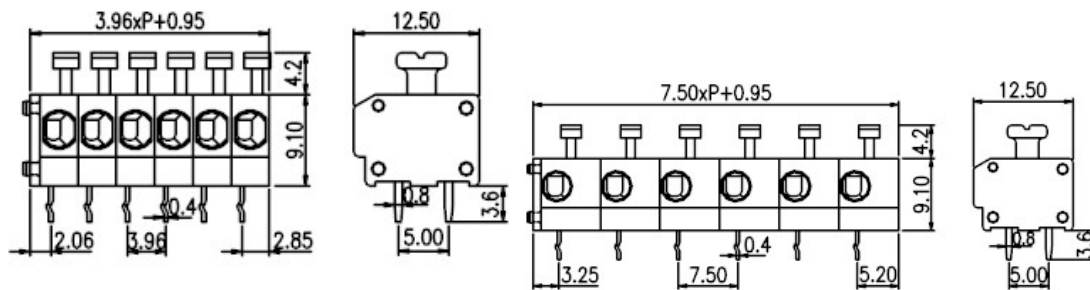


32-DT144RA-06P

32-DT144RA-06P1



32-DT144RA-04P



32-DT144RA-06P2

32-DT144RA-06P3



## Fast Connection - Screwless Spring Type

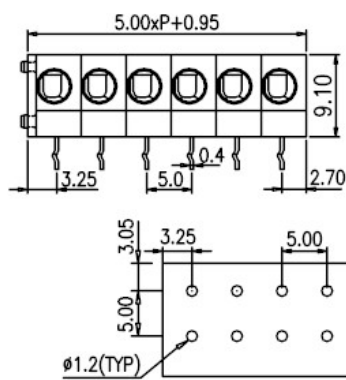
Low profile - DT144R Series - Pitch 3.81mm, 3.96mm, 5.0mm & 7.5mm

Insert and release wires with a screwdriver

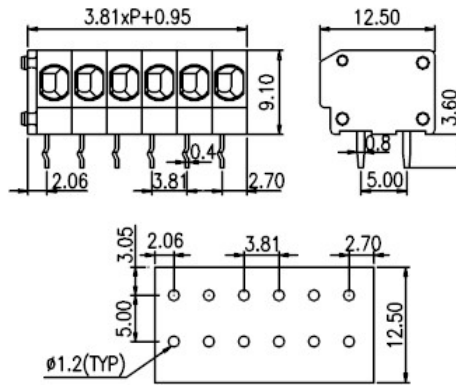
Terminals and solid wires can be inserted directly without the assistance of the lever.

Part Number	Poles	Pitch mm	Max Current	Max mm <sup>2</sup>
32-DT144R-xxP	2 to 24	5.0	10A	2.5
32-DT144R-xxP1	2 to 24	3.81	10A	1.5
32-DT144R-xxP2	2 to 24	3.96	10A	1.5
32-DT144R-xxP3	2 to 24	7.5	10A	2.5

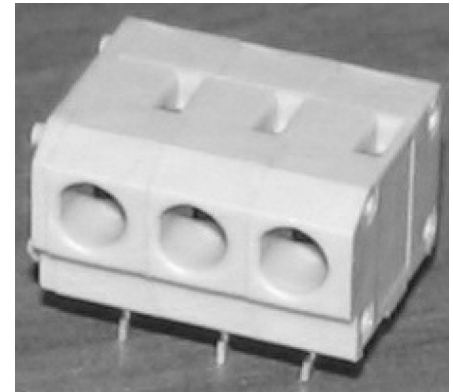
Where xx is the number of poles



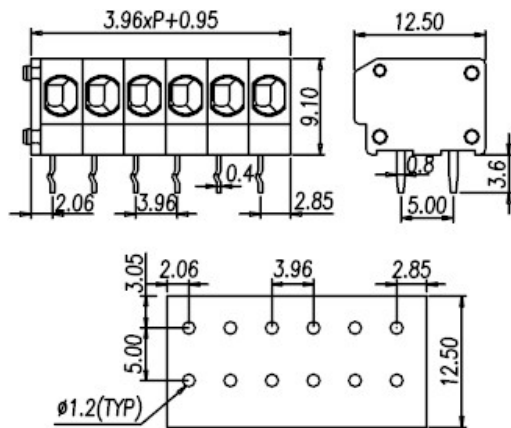
32-DT144R-06P



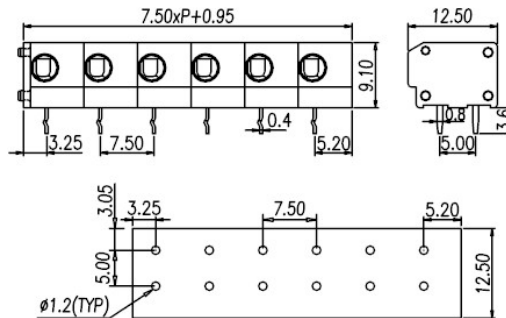
32-DT144R-06P1



32-DT144R-03P



32-DT144R-06P2



32-DT144R-06P3

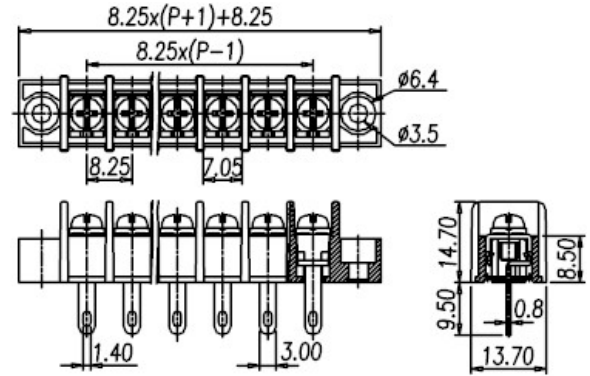
### Barrier Type - DT35 Series

Feed Through Solder Tag Type • 8.25mm Pitch - 20A

Rating: 300V / 20A Wire size 22 ~ 12 AWG Insulation Breakdown Volts : 2000VAC /  
Min Operating Temp. Range: -40°C ~ +105°C  
Materials: Polamide Housing, UL94VO, Black  
Terminals: Brass 0.8 x 3.0mm, tin plated  
Screw: M4 Steel Nickel Plated  
Screw Torque Value : 10 Kg-cm

Part No. 32-DT35A02W-xx  
xx = No of Poles  
( 2, 3, 4, 5, 6, 7, 8, 9, 10 & 12 pole)

Part Number	Pitch A	Current Rating
32-DT35A02W-xx	8.25	20A



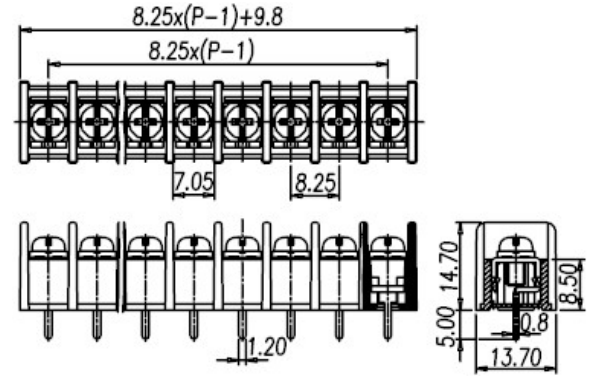
### Barrier Type - DT35 Series

PCB Mount - Centre Pin • 8.25mm Pitch - 20A

Offset Pin also available with B07 Series  
Rating: 300V / 20A Wire size 22 ~ 12 AWG  
Insulation Breakdown Volts: 2000VAC/Min Operating Temp. Range : -40°C ~ +105°C  
Materials: Polamide Housing, UL94VO, Black  
Terminals: Brass 0.8 x 3.0mm, tin plated  
Screw: M4 Steel Nickel Plated  
Screw Torque Value : 10 Kg-cm

Part No. 32-DT35B01W-xx  
xx = No of Poles  
( 2, 3, 4, 5, 6, 7, 8, 9, 10 & 12 pole)

Part Number	Pitch A	Current Rating
32-DT35B01W-xx	8.25	20A



### Barrier Type - DT35 Series

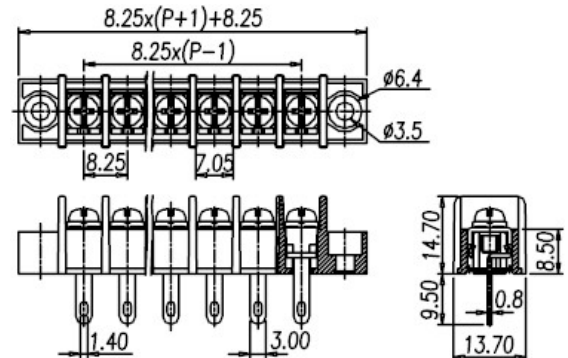
Feed Through Solder Tag Type • 8.25mm Pitch - 20A

#### For Marine Applications - Reduce corrosion with Brass Screws

Rating: 300V / 20A Wire size 22 ~ 12 AWG Insulation Breakdown Volts : 2000VAC /  
Min Operating Temp. Range: -40°C ~ +105°C  
Materials: Polamide Housing, UL94VO, Black  
Terminals: Brass 0.8 x 3.0mm, tin plated  
Screw: M4 Brass Nickel Plated  
Screw Torque Value: 10 Kg-cm

Part No. 32-DT35A02B-xx  
xx = No of Poles  
( 2, 3, 4, 5, 6, 7, 8, 9, 10 & 12 pole)

Part Number	Pitch A	Current Rating
32-DT35A02B-xx	8.25	20A



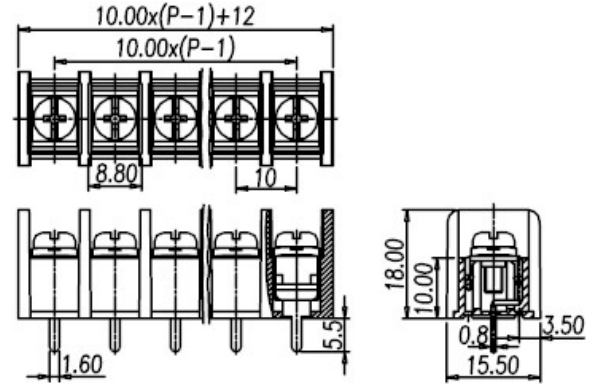
### Barrier Type - DT55 Series

PCB Mount - Centre Pin • 10mm Pitch - 25A

Offset Pin also available with B06 Series

Rating : 300V / 25A . Wire size 22 ~ 12 AWG  
 Insulation Breakdown Volts : 2000VAC / Min Operating Temp. Range : -40°C ~ +105°C  
 Materials : Polyamid Housing, UL94VO, Black  
 Pins : Brass 0.8x1.6mm tin plated  
 Screw : M3.5 Steel, Nickel Plated  
 Screw Torque Value : 10 Kg-cm

Part No. 32-DT55B01W-xx  
 xx = No of Poles  
 ( 2, 3, 4, 5, 6, 7, 8, 9, 10 & 12 pole)



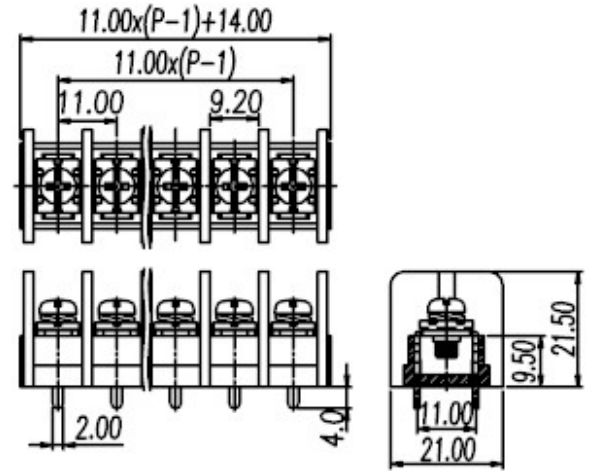
Part Number	Pitch A	Current Rating
32-DT55B01W-xx	10.0	25A

### Barrier Type - DT66 Series

PCB Mount - Dual Pin • 11mm Pitch - 40A

Rating : 600V / 40A . Wire size 18 ~ 10 AWG  
 Insulation Breakdown Volts : 2000VAC / Min Operating Temp. Range : -40°C ~ +130°C  
 Materials : Polyester Housing, UL94VO, Black  
 Pins : Brass 1x2mm x 2, tin plated  
 Screw : M4 Steel, Nickel Plated  
 Screw Torque Value : 18 Kg-cm

Part No. 32-DT66B01W-xx  
 xx = No of Poles  
 ( 2, 3, 4, 5, 6, 7, 8, 9, 10 & 12 pole)

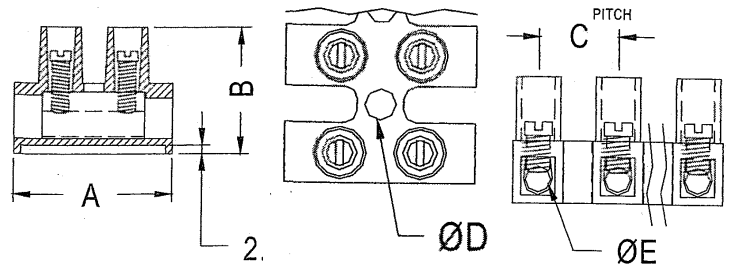
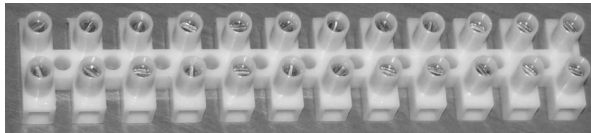


Part Number	Pitch A	Current Rating
32-DT66B01W-xx	11.0	40A

### Screw Terminal Block

Wire Protector Type • 12 Way. 6 & 10Amp

Material: Nylon 66 UL94V-2  
 Wire Protector and Standard types  
 Wire Protector specs are:  
 Voltage Rating: 380 volts  
 Temperature Rating: 105° C  
 Approvals: UL, VDE, CSA, F, D, N, S.



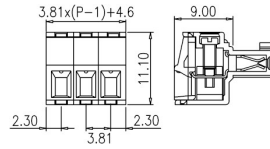
Part Number	Rating	Wire	A	B	C	D	E
<b>Standard type</b>							
32-PA09F/12	24A	2.5mm <sup>2</sup>	20.2	16.0	10.0	3.6	5.0
<b>Wire Protector</b>							
32-PA07FDS/12	17.5A	1.5mm <sup>2</sup>	17.0	13.4	8.2	2.9	2.8
32-PA09DS/12	24A	2.5mm <sup>2</sup>	20.2	16.7	10.0	3.6	5.0
32-PA12HDS/12	41A	6.0mm <sup>2</sup>	23.8	19.0	12.0	3.6	3.8

## Plug & Header System - 3.50mm & 3.81mm Pitch

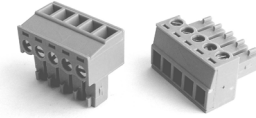
Versatile system assists design, testing & servicing - Elevator Style Cage for positive clamping.  
Polarised Design - Wire Size: 1.3mm<sup>2</sup> - Approvals: UL 300V @ 8A IEC 125V @ 8A

### Straight Terminal Female Plug

Clamp: Phosphor Bronze 0.3t Solder Plated, Wire Cage Brass Ni. Plated  
Housing: Polyamide 6.6 Green (UL94V0)  
**Part No. 32-EC350Vxx** 3.50mm Pitch  
**Part No. 32-EC381Vxx** 3.81mm Pitch  
xx = No of Poles  
(2, 3, 4, 5, 6, 7, 8, 9, 10, 12, 14 & 16 poles)

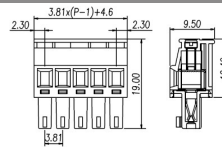


32-EC381V03

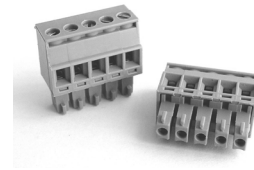


### Right Angle Terminal Female Plug

Clamp: Phosphor Bronze 0.3t Solder Plated, Wire Cage Brass Ni. Plated  
Housing: Polyamide 6.6 Green (UL94V0)  
**Part No. 32-EC350Rxx** 3.50mm Pitch  
**Part No. 32-EC381Rxx** 3.81mm Pitch  
xx = No of Poles  
(2, 3, 4, 5, 6, 7, 8, 9, 10, 12, 14 & 16 poles)

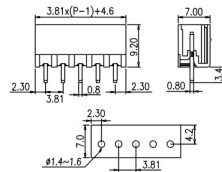


32-EC381R05

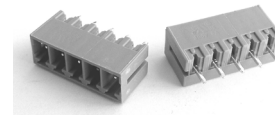


### Vertical PCB Mount Header

Closed ends to prevent cross connection.  
Solder Pin: Brass Solder Plated  
Housing: Polyamide 6.6 Green (UL94V0)  
**Part No. 32-ECH350Vxx** 3.50mm Pitch  
**Part No. 32-ECH381Vxx** 3.81mm Pitch  
xx = No of Poles  
(2, 3, 4, 5, 6, 7, 8, 9, 10, 12, 14 & 16 poles)

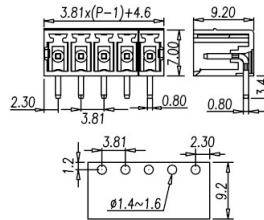


32-ECH381V05

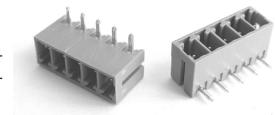


### Horizontal PCB Mount Header

Closed ends to prevent cross connection.  
Solder Pin: Brass Solder Plated  
Housing: Polyamide 6.6 Green (UL94V0)  
**Part No. 32-ECH350Rxx** 3.50mm Pitch  
**Part No. 32-ECH381Rxx** 3.81mm Pitch  
xx = No of Poles  
(2, 3, 4, 5, 6, 7, 8, 9, 10, 12, 14 & 16 poles)



32-ECH381R05



## Plug & Header Retaining Screw Series

### Straight Terminal Female Plug

Part No 32- EC350VMxx  
Part No 32- EC381VMxx  
xx = No of Poles

### Right Angle Terminal Female Plug

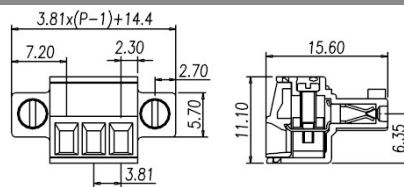
Part No 32- EC350RMxx  
Part No 32- EC381RMxx  
xx = No of Poles

### Vertical PCB Mount Header

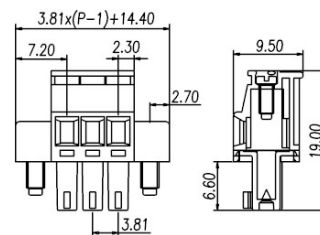
Part No 32- ECH350VMxx  
Part No 32- ECH381VMxx  
xx = No of Poles

### Horizontal PCB Mount Header

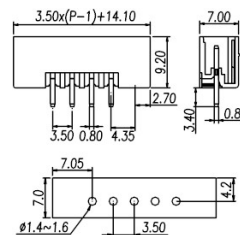
Part No 32- ECH350RMxx  
Part No 32- ECH381RMxx  
xx = No of Poles



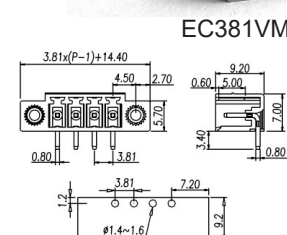
EC381VM03



EC381RM04

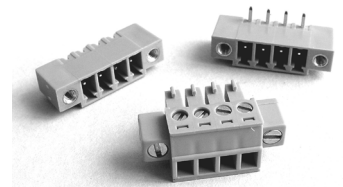


ECH381VM04



ECH381RM04

ECH381VM04 ECH381RM04



EC381VM04

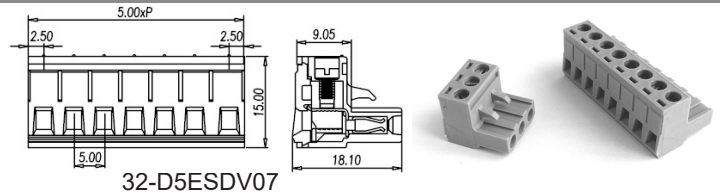
## Plug & Header System - 5.0mm & 5.08mm ( 0.2") Pitch

Versatile system assists design, testing & servicing. Elevator Style Cage for positive clamping. Polarised Design.  
 Rating: 10A @ 300V. Wire Size : 3.3mm<sup>2</sup> Max. - Approvals : UL , VDE, CSA, FI, Δ

### Straight Terminal Female Plug

Clamp: Phosphor Bronze 0.4t Solder Plated, Zinc Plated Steel Cage  
 Housing: Polyamide 6.6 Green (UL94V0)

**Part No. 32-D5ESDVxx** 5.0mm Pitch  
**Part No. 32-D2ESDVxx** 5.08mm Pitch  
 xx = No of Poles  
 (2, 3, 4, 5, 6, 7, 8, 9, 10, 12,14 & 16 poles)

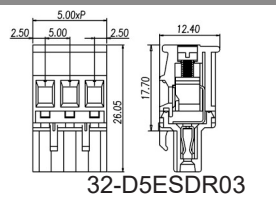


32-D5ESDV07

### Right Angle Terminal Female Plug

Clamp : Phosphor Bronze 0.4t Solder Plated, Zinc Plated Steel Cage  
 Housing : Polyamide 6.6 Green (UL94V0)

**Part No. 32-D5ESDRxx** 5.0mm Pitch  
**Part No. 32-D2ESDRxx** 5.08mm Pitch  
 xx = No of Poles  
 (2, 3, 4, 5, 6, 7, 8, 9, 10, 12,14 & 16 poles)

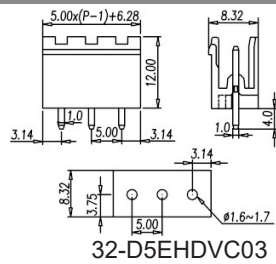


32-D5ESDR03

### Vertical PCB Mount Header

Mates with ESDV & ESDR Plug  
 Solder Pin: Brass Tin Plated 1.0 x1.0mm  
 Housing: Polyamide 6.6 Green (UL94V0)  
 Closed ends to prevent cross connection.

**Part No. 32-D5EHDVCxx** 5.0mm Pitch  
**Part No. 32-D2EHDVCxx** 5.08mm Pitch  
 xx = No of Poles  
 (2, 3, 4, 5, 6, 7, 8, 9, 10, 12,14 & 16 poles)

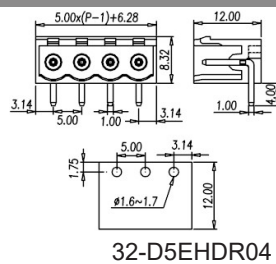


32-D5EHDVC03

### Horizontal PCB Mount Header

Mates with ESDV & ESDR Plug  
 Solder Pin: Brass Tin Plated 1.0 x1.0mm  
 Housing : Polyamide 6.6 Green (UL94V0)  
 Closed ends to prevent cross connection.

**Part No. 32-D5EHDRcx** 5.0mm Pitch  
**Part No. 32-D2EHDRcx** 5.08mm Pitch  
 xx = No of Poles  
 (2, 3, 4, 5, 6, 7, 8, 9, 10, 12,14 & 16 poles)



32-D5EHDR04

## Plug & Header Retaining Screw Series

### Straight Terminal Female Plug

Part No 32- D5ESDVMxx 5.0mm Pitch  
 Part No 32- D2ESDVMxx 5.08mm Pitch

### Right Angle Terminal Female Plug

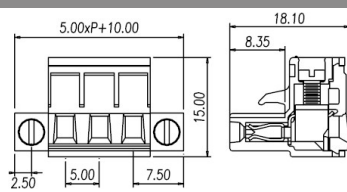
Part No 32- D5ESDRMxx 5.0mm Pitch  
 Part No 32- D2ESDRMxx 5.08mm Pitch

### Vertical PCB Mount Header

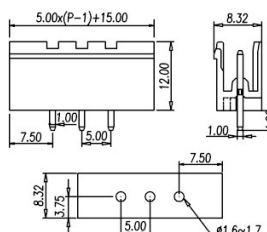
Part No 32- D5EHDVCMxx 5.0mm Pitch  
 Part No 32- D2EHDVCMxx 5.08mm Pitch

### Horizontal PCB Mount Header

Part No 32- D5EHDRCMxx 5.0mm Pitch  
 Part No 32- D2EHDRCMxx 5.08mm Pitch



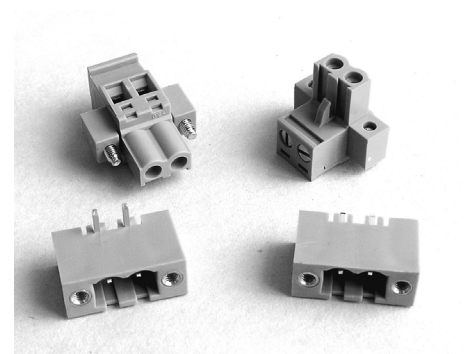
D5ESDVM03



D5EHDVCM03

D5ESDRM02

D5ESDVM02

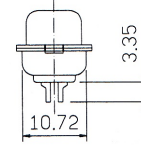
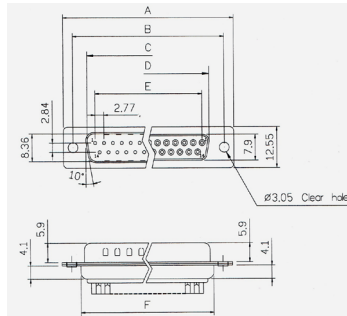


D5EHDRCM02

D5EHDVCM02

## D-SUB Straight Solder Type

- Quality Brass (Male) or Phosphor Bronze (Female) Gold Plated Contacts.
- Housing PBT 30% Glass ( UL94VO.)
- Current Rating: 5A
- Contact Resistance: 30mΩ max at 100mA DC
- Dielectric Strength: 1000VAC for 1 min.
- Operating Temp. -55°C to +105°C.

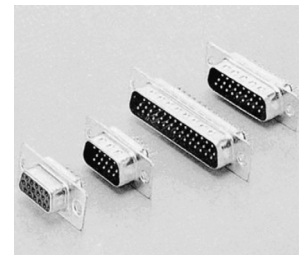
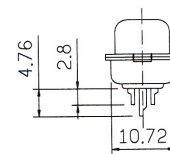
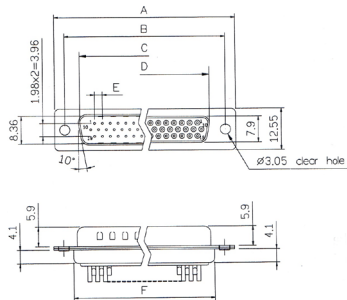


Part No 32-100 xx  
P(Male) or S(Female)  
xx = No of Contacts (09,15,25,37 or 50)

Positions	A	B	C	D	E	F
9	30.81	24.99	16.92	16.33	11.08	19.20
15	39.14	33.32	25.50	24.66	19.39	27.70
25	53.04	47.04	38.96	38.38	33.24	41.10
37	69.32	63.50	55.42	54.84	49.86	57.30

## D-SUB Straight Solder Type High Density

- Quality Brass (Male) or Phosphor Bronze (Female) Gold Plated Contacts.
- Housing PBT 30% Glass ( UL94VO.)
- Current Rating: 3A
- Contact Resistance: 20mΩ max at 1A DC
- Dielectric Strength: 1000VAC for 1 min.
- Operating Temp. -55°C to +105°C.

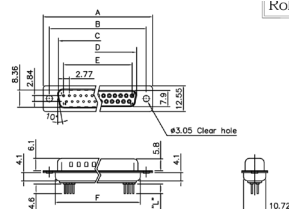


Part No 32-104 xx  
P(Male) or S(Female)  
xx = No of Contacts (15,26,44,62 or 78)

Positions	A	B	C	D	E	F
15	30.81	24.99	16.92	16.33	2.29	19.20
26	39.14	33.32	25.50	24.66	2.29	27.70
44	53.04	47.04	38.96	38.38	2.29	41.10
62	69.32	63.50	55.42	54.84	2.41	57.30

## D-SUB Dip Straight Type

- Quality Brass (Male) or Phosphor Bronze (Female) Brass Plated Contacts.
- Housing PBT 30% Glass ( UL94VO.)
- Current Rating: 3A
- Contact Resistance: 20mΩ max at 1A DC
- Dielectric Strength: 1000VAC for 1 min.
- Operating Temp. -55°C to +85°C.



KOH



Positions	A	B	C	D	E	F
9	30.81	24.99	16.92	16.33	11.08	19.20
15	39.20	33.30	25.25	24.70	19.39	27.70
25	53.05	47.04	38.96	38.40	33.24	41.10
37	69.40	63.50	55.42	54.80	49.86	57.30

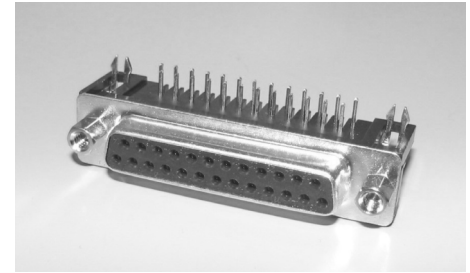
Part No 32-101 xx  
XX X X X X X X X X  
a b c d e f g h i

a = No of pins, b = (1 male / 2 female), c = contact plating, d = shell plating, e - insulator colour, f = position of clinch nut, g = flange mounting option, h = pin type, i = with / without ferrite

## D-SUB Connectors

### Right Angle PCB Mounting

- Quality Brass (Male) or Phosphor Bronze (Female) Gold Plated Contacts.
- Housing PBT 30% Glass ( UL94VO.)
- Current Rating: 5A
- Contact Resistance: 30mΩ max at 100mA DC
- Dielectric Strength: 1000VAC for 1 min.
- Operating Temp. -55°C to +105°C.



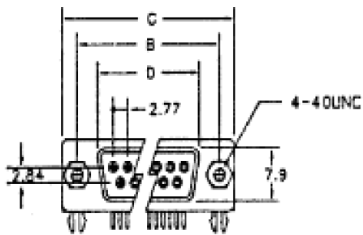
Male

Female

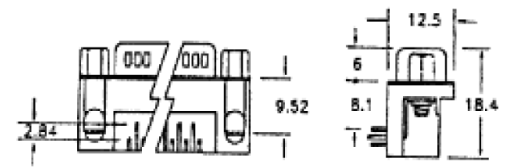
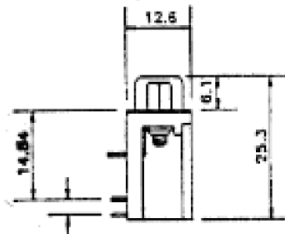
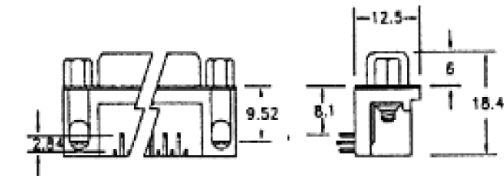
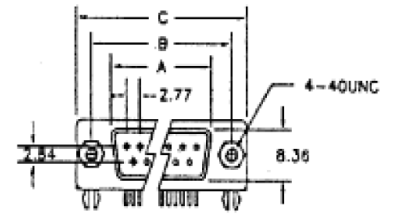
#### Standard Type

Part Number 32-107B xx P (Male) or S (Female)

xx = Number of Contacts (09, 15, 25 or 37)



Positions	A	B	C	D	E
9	16.92	24.99	30.81	19.28	16.33
15	25.25	33.62	39.14	27.51	24.66
25	38.96	47.04	53.04	41.30	38.38
37	55.42	61.50	69.32	57.71	54.84



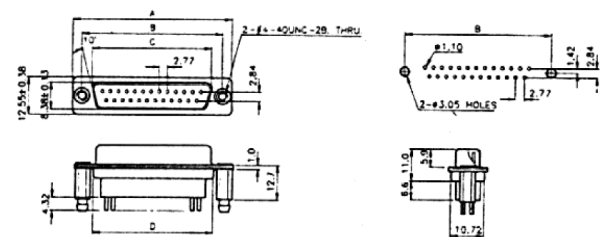
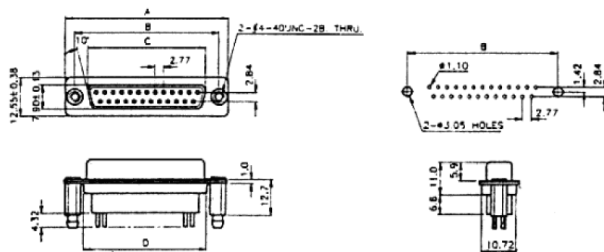
## Straight PCB Mounting

- Quality Brass (Male) or Phosphor Bronze (Female) Gold Plated Contacts.
- Housing: Glass Filled Nylon ( UL94VO.)
- Current Rating: 5A
- Contact Resistance: 15mΩ max
- Dielectric Strength: 1000VAC for 1 min.
- Operating Temp. -55°C to +105°C.



Female

Male



Positions	A	B	C	D
	±0.38	±0.13	±0.13	±0.13
9	30.81	24.99	16.33	19.28
15	39.14	33.32	24.66	27.51
25	53.04	47.04	38.38	41.30
37	69.32	63.50	54.85	57.71

Positions	A	B	C	D
	±0.38	±0.13	±0.13	±0.13
9	30.81	24.99	16.92	19.28
15	39.14	33.32	25.25	27.51
25	53.04	47.04	38.96	41.30
37	69.32	63.50	55.42	57.71

#### Standard Types

Part No. 32-155 xx P (Male) or S (Female) xx = No of Contacts (09,15,25 or 37)

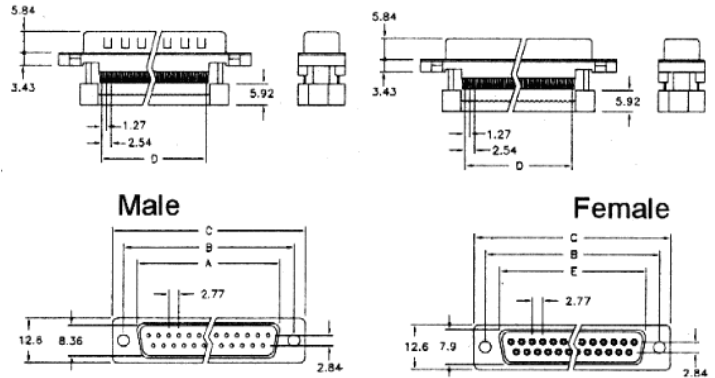
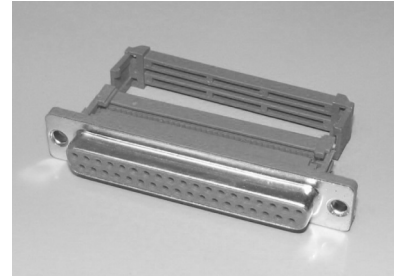
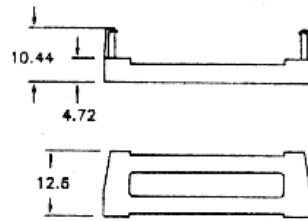
Variations available: Holes, Threads, Screw Locks, Board Locks, Setbacks, Heights.

## D-SUB IDC Connectors

- Quality Brass (Male) or Phosphor Bronze (Female) Gold Plated Contacts.
- Housing PBT 30% Glass (UL94VO.)
- Current Rating: 1A
- Contact Resistance: 30mΩ max at 100mA DC.
- Dielectric Strength: 500VAC for 1 min.
- Operating Temp. -55°C to +105°C.

Part No. 32-103 xx P(Male) or S(Female)  
xx = No of Contacts (09,15, 25 or 37)

Positions	A	B	C	D	E
9	16.92	25.00	30.80	10.16	16.30
15	25.25	33.32	39.10	17.78	24.50
25	38.96	47.04	53.10	30.48	38.30
37	55.45	63.50	69.50	45.72	54.80

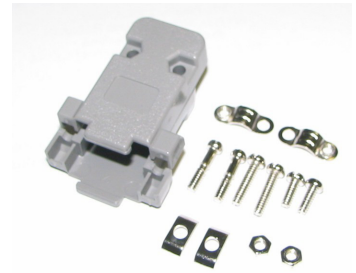


## D-SUB Type Covers

- Plastic Cover with strain relief casing screws and mounting screws.
- Housing : ABS Thermoplastic (UL94V-0)

Part No. 32-158 xx PG Standard Screws  
32-158 xx PG-TS Long Thumb Screws

xx = No of Contacts (09,15,25,37 or 50)

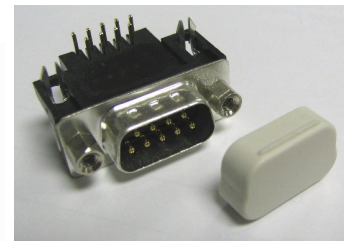
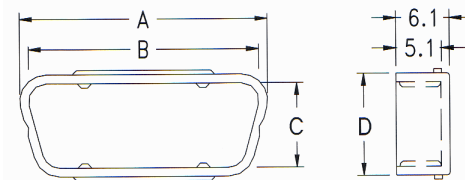


## D-SUB Connector Dust Covers

- Protect your 'D' connectors from dust and contamination.
- Material: Polyethylene

### Dimensions (mm)

Part Number	A	B	C	D
32-DTC09F	18.5	16.5	7.8	10.2
32-DTC25F	40.6	38.6	7.8	10.2
32-DTC09M	20.0	18.0	9.5	11.8
32-DTC25M	42.0	40.0	9.5	11.8

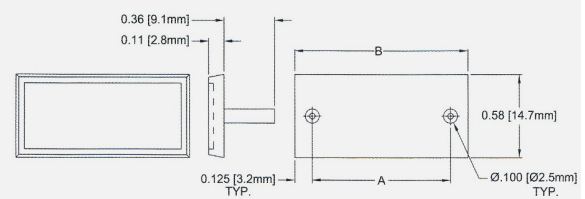
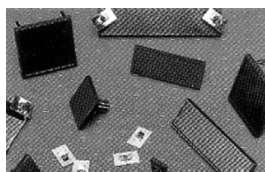


## D-SUB Connector Dust Covers

- Fast easy assembly with push-on nut supplied with each blank.

Part No. 32-B10 xx

xx = No of Contacts (09,15,25,37 or 50)





## PCB Headers with Latches

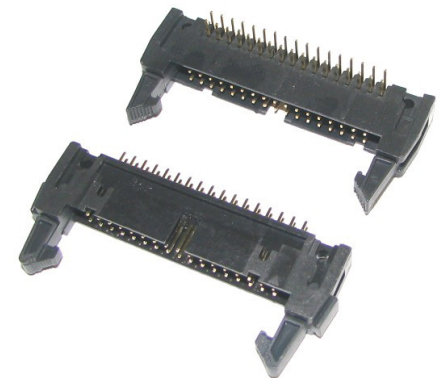
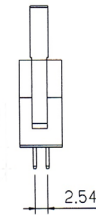
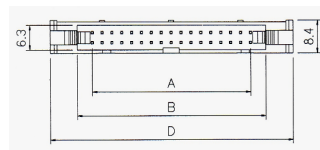
2.54mm pitch

- Quality Brass Gold Plated Contacts.
- Housing PBT 30% Glass (UL94VO.)
- Current Rating: 1A
- Dielectric Strength: 500VAC for 1 min.
- Operating Temp. -55°C to +105°C.

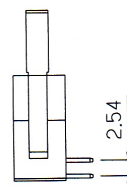
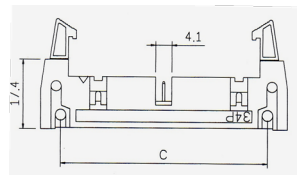
Part No. 32-119 xx S or R      S = Straight  
 xx = No of Contacts            R = Right Angle

Position	A	B	C	D
10	10.16	17.96	21.84	32.00
12	12.70	20.50	24.38	34.54
14	15.24	23.04	26.92	37.08
16	17.78	25.58	29.46	39.62
20	22.86	30.66	34.54	44.70
24	27.94	35.74	39.62	49.78
26	30.48	38.28	42.16	52.32
30	35.56	43.36	47.24	57.40
34	40.64	48.44	52.32	62.48
40	48.26	56.06	60.48	70.10
50	60.96	68.76	72.64	82.80
60	73.66	81.46	85.34	95.50
64	78.74	86.54	90.42	100.58

### Straight



### Right Angle



## IDC Socket with Strain Relief

2.54mm pitch

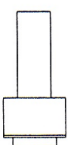
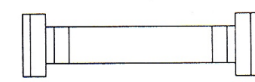
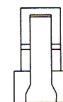
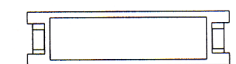
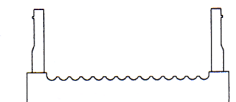
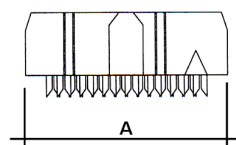
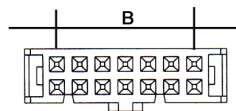
- Contacts: Gold Plated Phosphor Bronze.
- Housing PBT 30% Glass (UL94VO.)
- Contact Resistance: 30mΩ max at 100mA DC.
- Current Rating: 1A
- Operating Temp: -55°C to +105°C.

Part No. 32-110 xx            xx = No of Contacts



### Dimensions

Position	A	B
10	17.27	10.16
14	22.40	15.24
16	24.94	17.78
20	30.00	22.86
24	35.10	27.94
26	37.59	30.48
30	42.66	35.56
34	47.80	40.64
40	55.37	48.26
50	68.18	60.96
60	80.80	73.66
64	85.90	78.74



### Strain Relief

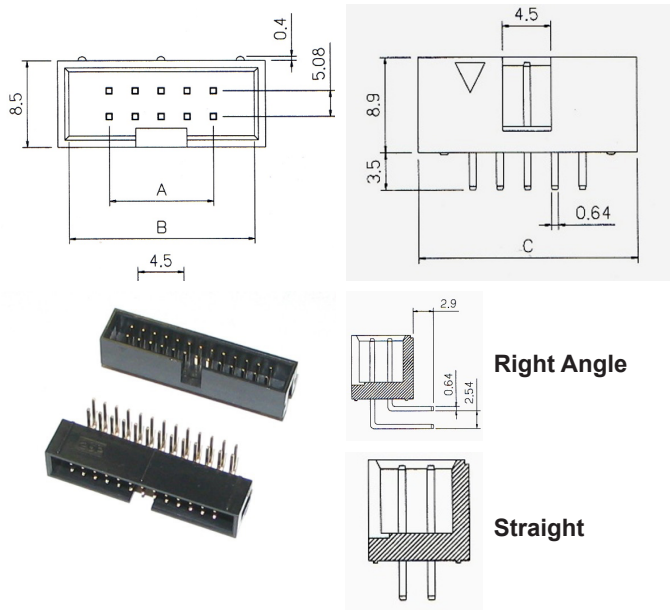
## Box Header 2.54mm pitch

- Brass Gold Plated Contacts.
- Current Rating: 1A
- Housing PBT 30% Glass UL94VO.
- Dielectric Strength: 500VAC for 1 min.
- Operating Temp. -55°C to +105°C.

Part No. 32-118 xx S or R  
xx = No of Contacts  
S = Straight  
R = Right Angle

### Dimensions

Positions	A	B	C
8	7.62	15.56	17.76
10	10.16	18.10	20.30
12	12.70	20.64	22.84
14	15.24	23.18	25.38
16	17.78	25.72	27.92
20	22.86	30.80	33.00
24	27.94	35.88	38.08
26	30.48	38.42	40.62
30	35.56	43.50	45.70
34	40.64	48.58	50.78
40	48.26	56.20	58.40
44	53.34	61.28	63.48
50	60.96	68.90	71.10
60	73.66	81.60	83.80
64	78.74	86.68	88.88



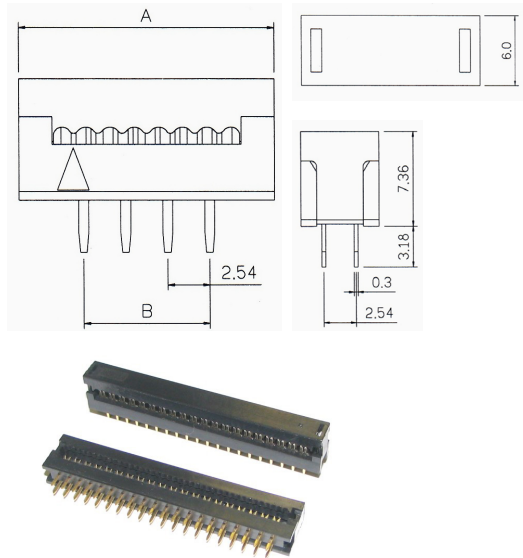
## DIP Transition - PCB to Ribbon. 2.54mm pitch

- Current Rating: 1A
- Contacts: Gold Plated Brass
- Housing: PBT 30% Glass UL94VO

Part No. 32-123 xx  
xx = No of Contacts

### Dimensions

Positions	A	B
8	15.48	7.62
10	18.02	10.16
12	20.56	12.70
14	23.10	15.24
16	25.64	17.78
18	28.18	20.32
20	30.72	22.86
24	35.84	27.98
28	40.88	33.02
30	43.42	35.56
34	48.50	40.64
40	56.12	48.26
50	68.82	60.96
60	81.52	73.66
64	86.60	78.74



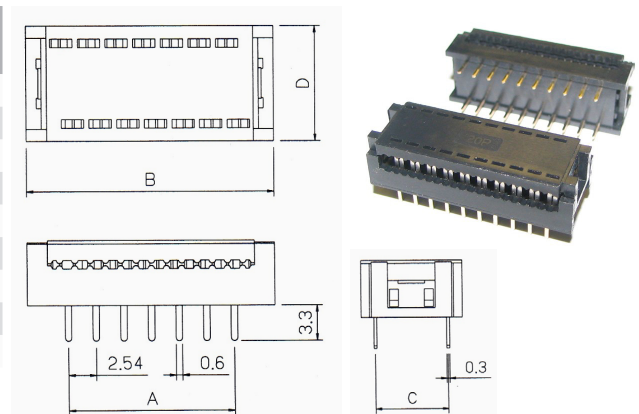
## DIP Plug 2.54mm pitch

- Housing: PBT 40% Glass Fibre UL94VO.)
- Contacts: Phosphor Bronze
- Current Rating: 1A
- Contact Resistance: 30mΩ max at 100mA DC.
- Insulation Resistance: 1000mΩ min. at DC 500V
- Operating Temp. -55°C to +105°C.

Part No. 32-124 xx  
xx = No of Contacts

### Dimensions

Positions	A	B	C	D
8	7.62	14.60	7.62	10.60
10	10.16	16.96	7.62	10.60
14	15.24	22.74	7.62	10.60
16	17.78	25.12	7.62	10.60
18	20.32	26.74	7.62	10.60
20	22.86	29.74	7.62	10.60
24	27.94	35.00	7.62	10.60
28	33.02	40.10	7.62	10.60
40	48.28	55.20	7.62	10.60

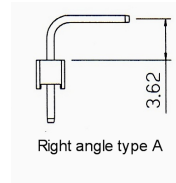
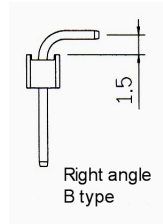
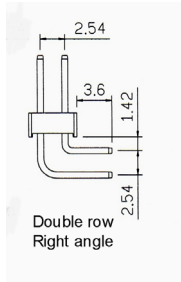
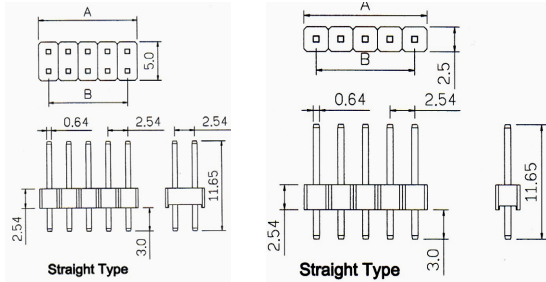
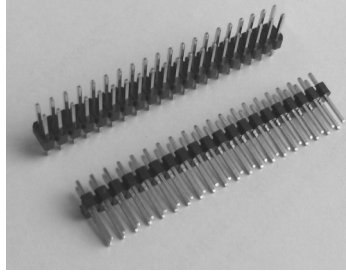


## Pin Headers

2.54mm pitch

- Current Rating: 1A
- Contacts : Gold Plated Brass
- Housing: PBT 30% Glass UL94VO

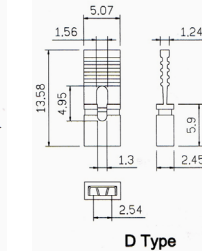
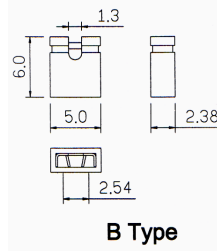
Part No 32-112 xx S/D V/R 2.54 mm Pitch  
 xx = No of Contacts  
 V = Straight  
 R = Right Angle  
 S = Single Row 2 to 40 way  
 D = Double Row 4 to 80 way



## Mini Jumpers

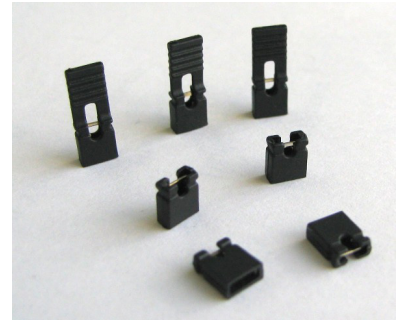
2.54mm pitch

- Current Rating: 1A
- Gold Plated Phosphor Bronze Contacts
- Housing: PBT 30% Glass UL94VO
- Insulation Resistance : 1000Mohm min. at 500V



Part No 32-116BG1

Part No 32-116DG1

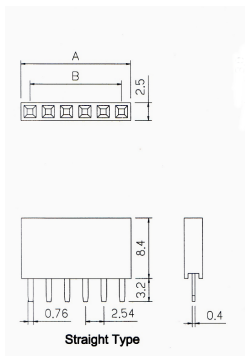
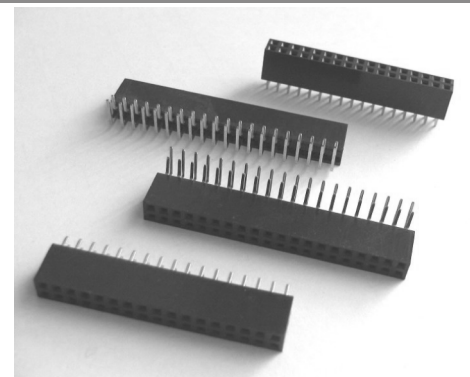


## PCB Socket

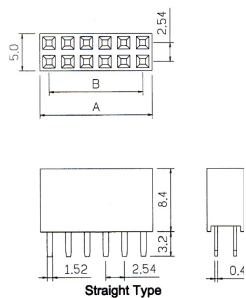
2.54mm pitch

- Gold Plated Phosphor Bronze Contacts.
- Current Rating: 1A
- Housing PBT 30% Glass UL94VO.
- Dielectric Strength: 500VAC for 1 min.
- Operating Temp. -55°C to +105°C.

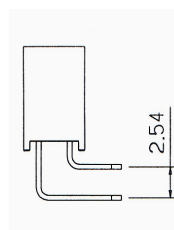
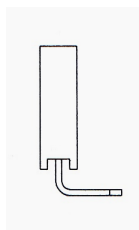
Part No 32-114 xx S/D V/R 2.54 mm Pitch  
 xx = No of Contacts  
 V = Straight  
 R = Right Angle  
 S = Single Row 2 to 40 way  
 D = Double Row 4 to 80 way



Single Row



Double Row



## Pin Headers

2.0 mm Pitch

- Current Rating: 1A
- Contacts : Phosphor Bronze
- Housing: PBT 30% Glass UL94VO

Part No 32-113 xx S/D V/R 2.0 mm Pitch

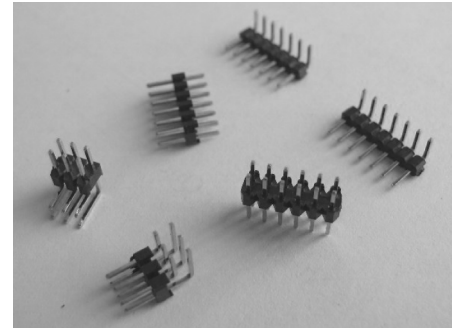
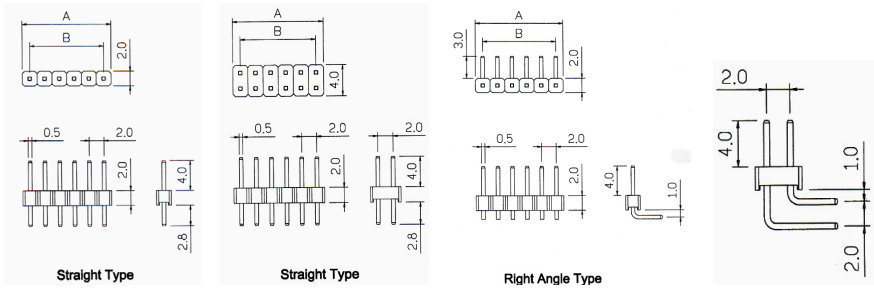
xx = No of Contacts

V = Straight

R = Right Angle

S = Single Row 2 to 40 way

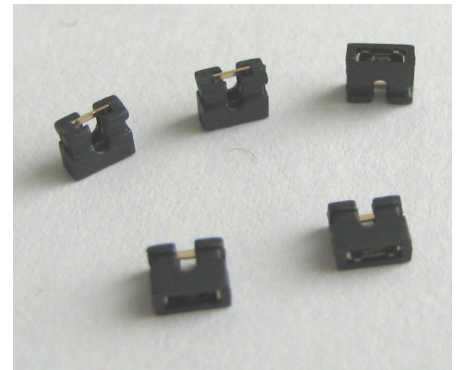
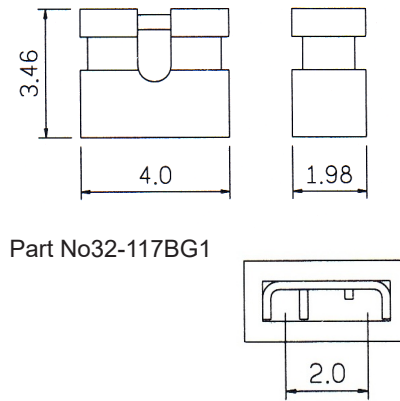
D = Double Row 4 to 80 way



## Mini Jumpers

2.0 mm Pitch

- Current Rating: 1A
- Contacts : Gold Plated Phosphor Bronze
- Housing: PBT 30% Glass UL94VO
- Insulation Resistance : 1000Mohm min. at 500V



## PCB Socket

2.0 mm Pitch

- Gold Plated Phosphor Bronze Contacts.
- Current Rating: 1A
- Housing PBT 30% Glass UL94VO.
- Dielectric Strength: 500VAC for 1 min.
- Operating Temp. -55°C to +105°C.

Part No 32-115 xx S/D V/R 2.0 mm Pitch

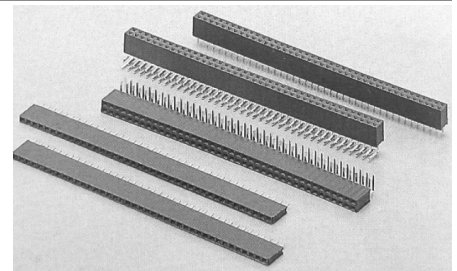
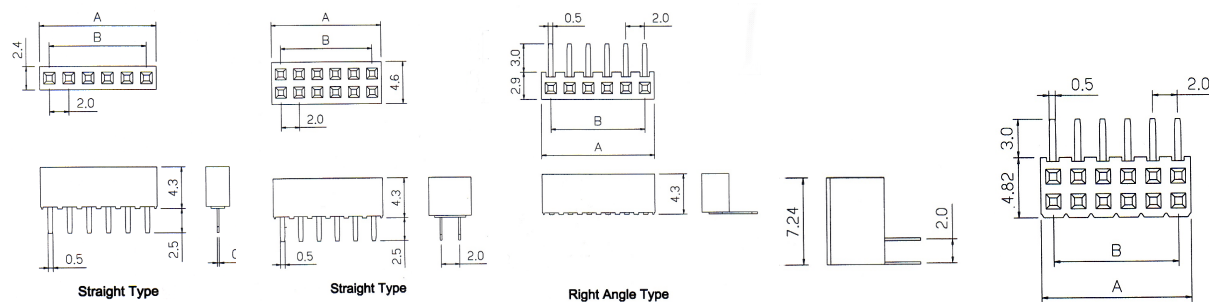
xx = No of Contacts

V = Straight

R = Right Angle

S = Single Row 2 to 40 way

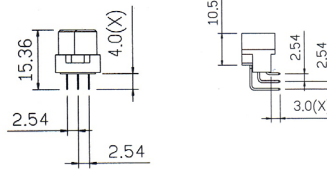
D = Double Row 4 to 80 way



### Din 41612 C Type (3 Row)

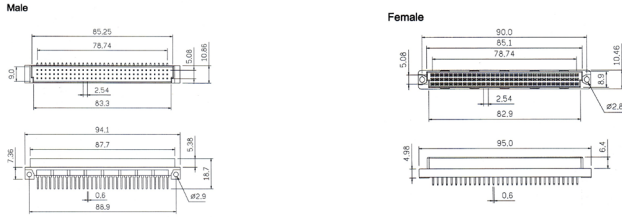
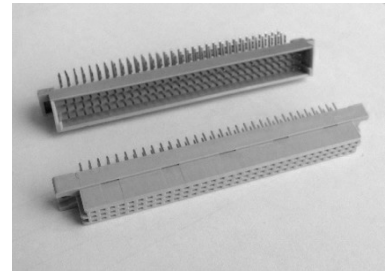
2.54 & 5.08 mm Pitch

- Current Rating: 2A
- Voltage Rating: 250 VACrms 60Hz
- Current Rating: 2A
- Contact Resistance: 30 milliohm max. at 1 amp DC
- Insulation Resistance: 1000 megohms at 500 VDC.
- Dielectric: 1000 VAC rms 60Hz for 1 min.
- Contacts: Female: Phosphor bronze full gold.  
Male: Brass
- Housing: Glass filled thermoplastic UL94VO rated



Female Male

Part No 32-146 xx  
xx = No of Contacts, 64 or 96 @ 2.54mm pitch

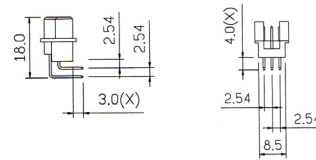


Other sizes available on request

### Din 41612 R Type (3 Row)

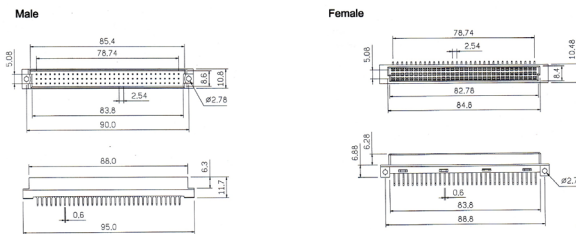
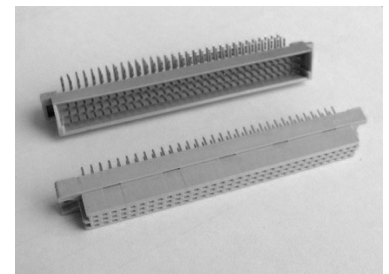
2.54 & 5.08 mm Pitch

- Current Rating: 2A
- Voltage Rating: 250 VACrms 60Hz
- Current Rating: 2A
- Contact Resistance: 30 milliohm max. at 1 amp DC
- Insulation Resistance: 1000 megohms at 500 VDC.
- Dielectric: 1000 VAC rms 60Hz for 1 min.
- Contacts: Female: Phosphor bronze full gold.  
Male: Brass
- Housing: Glass filled thermoplastic UL94VO rated



Female Male

Part No 32-147 xx  
xx = No of Contacts, 64 or 96 @ 2.54mm pitch

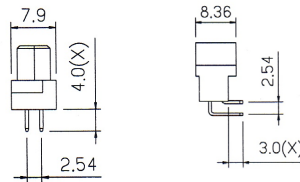


Other sizes available on request

### Din 41612 B/2 Type (2 Row)

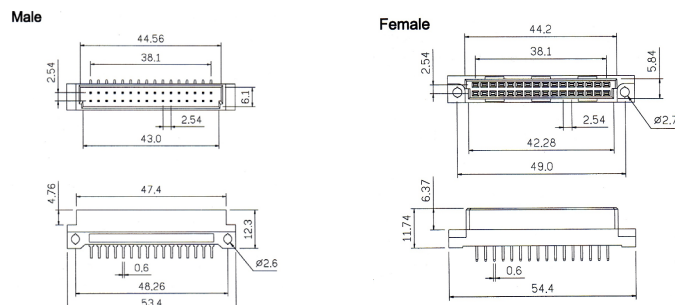
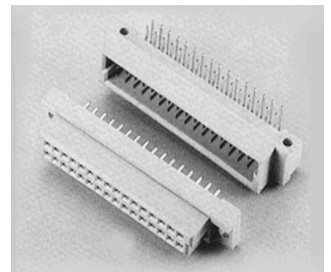
2.54 & 5.08 mm Pitch

- Current Rating: 2A
- Voltage Rating: 250 VACrms 60Hz
- Current Rating: 2A
- Contact Resistance: 30 milliohm max. at 1 amp DC
- Insulation Resistance: 1000 megohms at 500 VDC.
- Dielectric: 1000 VAC rms 60Hz for 1 min.
- Contacts: Female: Phosphor bronze full gold.  
Male: Brass
- Housing: Glass filled thermoplastic UL94VO rated



Female Male

Part No 32-148 xx  
xx = No of Contacts, 16 or 32 @ 2.54mm pitch



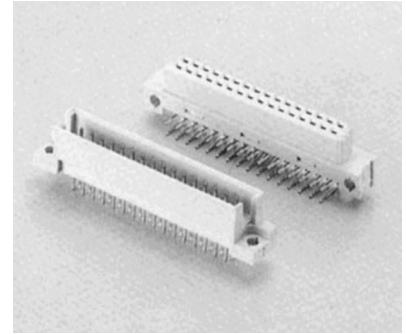
Other sizes available on request

## Din 41612 Q/2 Type (2 Row) 2.54 & 5.08 mm Pitch

- Current Rating: 2A
- Voltage Rating: 250 VACrms 60Hz
- Current Rating: 2A
- Contact Resistance: 30 milliohm max. at 1 amp DC
- Insulation Resistance: 1000 megohms at 500 VDC.
- Dielectric: 1000 VAC rms 60Hz for 1 min.
- Contacts: Female: Phosphor bronze full gold  
Male: Brass
- Housing: Glass filled thermoplastic UL94VO rated

Part No 32-149 xx

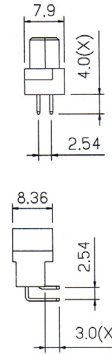
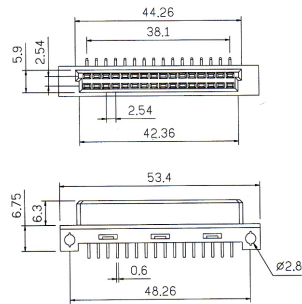
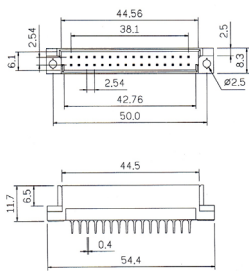
xx = No of Contacts, 16 or 32 @ 2.54mm pitch



Other sizes available on request

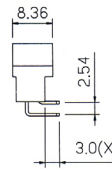
Male

Female



Female

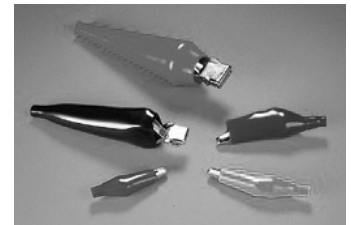
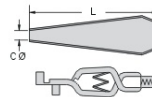
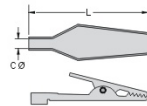
Male



## Alligator Clips

Used for creating a temporary electrical connection

Part Number	L1	CØ	Ampere
32-CA32	35.0	3.0	2A
32-CA36	40.0	3.0	3A
32-CA50	50.0	4.0	5A

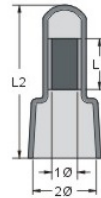


- Available in black and red. Add R or B after part number for red or black clip eg 32-CA32R

## Connectors

### Close-End Wire Connector

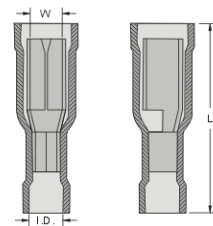
- Material: UL approved Nylon 66
- Nylon insulated close-end wire connector
- To apply, insert pre-stripped wires into connector tube and crimp it with crimping tool to hold wires firmly even in vibration.



Part Number	L1	L2	Ø1	Ø2	sq	Suitable Wire	
						AWG	DIN mm <sup>2</sup> d
28-CE1	7.0	20.0	2.4	7.8	1.25	22-16	0.50 ~ 1.75
28-CE2	7.5	20.0	3.0	8.0	2.0	16-14	1.00 ~ 3.00
28-CE5	8.0	25.3	3.8	10.5	5.5	12-10	2.50 ~ 6.00
28-CE8	8.5	27.8	4.7	12.0	8.0	8	4.00 ~ 9.00

### Bullet Socket Connector Female

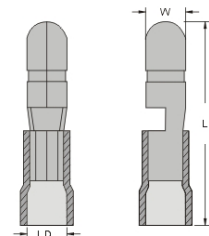
- Material: PVC + Brass
- The bullet socket is designed to receive a bullet-shaped male connector.
- Commonly used in automotive wiring for easy and reliable connections, particularly in areas where frequent disconnection might be needed.
- Designed to withstand vibration and movement, which is especially useful in automotive and industrial settings.



Part Number	ID	W	L	Colour	Suitable Wire	
					AWG	DIN mm <sup>2</sup> d
28-BSFE1.25	4.0mm ±0.5	3.8mm ±0.2	23.0mm ±1.5	Red	22-16	0.50 ~ 1.0
28-BSFE2	4.3mm ±0.5	3.8mm ±0.2	23.0mm ±1.5	Blue	16-14	1.5 ~ 2.5
28-BSFE5.5	5.5mm ±0.5	4.9mm ±0.2	24.0mm ±1.5	Yellow	12-10	4 ~ 6

### Bullet Socket Connector Male

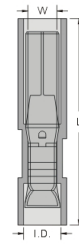
- Material: PVC + Brass
- The Male bullet connector has a cylindrical metal pin that fits into a corresponding female bullet connector.
- Used in automotive, marine, and electronics applications.
- When connecting, the male bullet connector slides into the female bullet connector, making a secure electrical connection. This design allows for easy disconnection if needed.



Part Number	ID	W	L	Colour	Suitable Wire	
					AWG	DIN mm <sup>2</sup> d
28-BSMA1.25	4.0mm +0.7/-0.1	4.0mm +0.2/-0.1	21.0mm ±1.0	Red	22-16	0.50 ~ 1.0
28-BSMA2	4.3mm +0.7/-0.1	4.0mm +0.2/-0.1	21.0mm ±1.0	Blue	16-14	1.5 ~ 2.5
28-BSMA5.5	5.5mm +0.7/-0.1	5.0mm +0.2/-0.1	23.0mm ±1.0	Yellow	12-10	4 ~ 6

## Insulated Bullet Socket Connector - Double Crimp Female

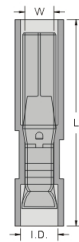
- Material: Nylon + Brass
- This connector is designed to receive a bullet-shaped male connector. The insulation is crucial for preventing short circuits and ensuring that the electrical connection remains safe and reliable. Commonly used in automotive wiring for easy and reliable connections, particularly in areas where frequent disconnection might be needed.
- Double crimping refers to the crimping process where two separate crimps are made on the connector. One crimp is used to secure the wire itself to the connector, and the other is used to crimp the insulation of the wire. This double crimping technique provides a more secure and robust connection compared to single crimping.
- These connectors are often used in automotive, marine, and various other electrical applications where a durable, insulated connection is needed.



Part Number	ID	W	L	Colour
28-IBSFE1.25	4.2mm ±0.3	3.9mm ±0.2	24.5mm ±1.0	Red
28-IBSFE2	4.9mm ±0.3	3.9mm ±0.2	24.5mm ±1.0	Blue

## Insulated Bullet Socket Connector - Double Crimp Male

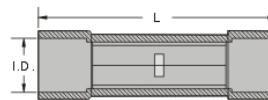
- Material: Nylon + Brass
- This connector is designed to be plugged into a corresponding female connector.
- Double crimping refers to the way the connector is attached to the wire. Double crimping involves two separate crimping actions—one for the insulation and one for the conductor (wire). This creates a secure and stable connection by ensuring that both the insulated part and the actual wire are tightly held in place.
- These connectors are commonly used in automotive, electronic, and other applications where secure and insulated electrical connections are required. They are favored for their ease of use and reliability in maintaining good electrical contact while protecting against short circuits and environmental factors.



Part Number	ID	W	L	Colour
28-IBSMA1.25	4.2mm ±0.3	4.0mm ±0.2	24.5mm ±1.0	Red
28-IBSFE2	4.9mm ±0.3	4.0mm ±0.2	25.0mm ±1.0	Blue

## Insulated Butt Splice Connector

- Material: PVC + Brass
- An insulated butt splice connector is a type of electrical connector used to join two wires together securely while providing insulation to prevent short circuits and protect against electrical hazards.
- To use one, you strip the insulation off the ends of the wires you want to connect, insert the exposed wires into the barrel of the connector, and then use a crimping tool to compress the barrel around the wires. This creates a strong mechanical and electrical connection. The insulation sleeve is then typically crimped around the wires for additional security and protection.
- These connectors are commonly used in automotive, marine, and household electrical wiring where a reliable and insulated connection is needed.

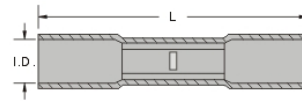


Part Number	ID	L	Colour	Suitable Wire	
				AWG	DIN mm <sup>2</sup> d
28-IBUTP1.25S	4.0mm ±0.5	26.5mm ±1.5	Red	22-16	0.50 ~ 1.0
28-IBUTSP2	4.8mm ±0.5	26.5mm ±1.5	Blue	16-14	1.5 ~ 2.5
28-IBUTSP5.5	5.8mm ±0.5	26.5mm ±1.5	Yellow	12-10	4 ~ 6



## Butt Splice Connector - Waterproof and Heat Shrinkable

- Material: Polyolefin + Copper
- Connector consists of a metal splice (which can be a crimped or soldered section) encased in a heat-shrinkable tubing. The metal part is where the wires are joined, while the heat-shrink tubing provides insulation and protection.
- Commonly used in automotive, marine, and electrical wiring projects where reliability and resistance to environmental factors are important.
- The heat shrink tubing provides a protective barrier against moisture, dust, and mechanical abrasion, which helps prevent corrosion and damage.
- The connector offers electrical insulation, reducing the risk of short circuits or electrical leakage.

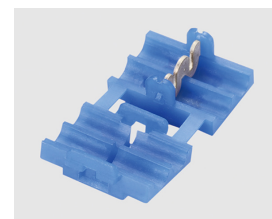
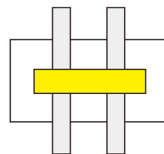
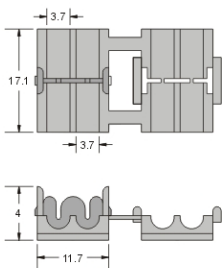


Part Number	ID	L	Colour	Suitable Wire	
				AWG	DIN mm <sup>2</sup> d
28-WHSIBS1.25	4.6mm	37.0mm	Red	22-16	0.50 ~ 1.0
28-WHSIBS2	5.4mm	37.0mm	Blue	16-14	1.5 ~ 2.5
28-WHSIBS5.5	6.5mm	42.0mm	Yellow	12-10	4 ~ 6

## Mid-way Wire Connectors

- Material: Brass with PP
- A mid-way wire connector is typically used in electrical wiring to connect two segments of wire together in the middle of a run. This type of connector is useful when you need to extend or repair wiring without having to replace the entire length.
- Insert wires on the grooves of connector, clamps down the plastic body and electricity can be conducted.
- Quick installation without stripping wire.
- Can be joined for connection.

Part Number	Colour	Suitable Wire AWG
28-MWW01	Blue	22-16



Part Number	Colour	Suitable Wire AWG
28-MWW02	Blue	18-14

