

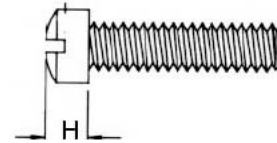
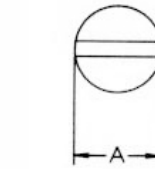
## Nylon Machine Screws - Pan Slot

Hi-Q Nylon screws are tough, light, durable and corrosion resistant in normal temperatures

Part Number	Thread Size	Thread Length	Part Number	Thread Size	Thread Length
08-PNS2-04PS	M2	4	08-PNS4-20PS	M4	20
08-PNS2-05PS	M2	5	08-PNS4-25PS	M4	25
08-PNS2-06PS	M2	6	08-PNS4-30PS	M4	30
08-PNS2-10PS	M2	10	08-PNS4-35PS	M4	35
08-PNS2-20PS	M2	20	08-PNS4-40PS	M4	40
08-PNS2-25PS	M2	25	08-PNS5-08PSV*	M5	8
08-PNS2.5-04PS	M2.5	4	08-PNS5-10PS*	M5	10
08-PNS2.5-05PS	M2.5	5	08-PNS5-12PS*	M5	12
08-PNS2.5-06PS	M2.5	6	08-PNS5-16PS*	M5	16
08-PNS2.5-10PS	M2.5	10	08-PNS5-20PSV*	M5	20
08-PNS2.5-12PS	M2.5	12	08-PNS5-25PSV*	M5	25
08-PNS2.5-20PSV	M2.5	20	08-PNS5-30PS	M5	30
08-PNS3-05PSV	M3	5	08-PNS5-40PS	M5	40
08-PNS3-06PSV*	M3	6	08-PNS6-12PS	M6	12
08-PNS3-10PS	M3	10	08-PNS6-16PS	M6	16
08-PNS3-12PS	M3	12	08-PNS6-20PS	M6	20
08-PNS3-16PS	M3	16	08-PNS6-25PS	M6	25
08-PNS3-20PS	M3	20	08-PNS6-30PS	M6	30
08-PNS3-25PS	M3	25	08-PNS8-16PS	M8	16
08-PNS3-30PS	M3	30	08-PNS8-20PS	M8	20
08-PNS3-35PS	M3	35	08-PNS8-30PS	M8	30
08-PNS3-42PS	M3	42	08-PNS8-50PS	M8	50
08-PNS4-06PS	M4	6			
08-PNS4-08PS	M4	8			
08-PNS4-10PS	M4	10			
08-PNS4-12PS	M4	12			
08-PNS4-16PSV	M4	16			

Part Number	Thread Size	Thread Length
08-PNS10-13PS	M10	13
08-PNS10-30PS	M10	30
08-PNS10-50PS	M10	50

**Material: Nylon 6/6**  
 \* = Available in black  
 Thread sizes are in millimetres  
 More sizes available  
 For non-stocked black washers, enquire about our in-house dye service.



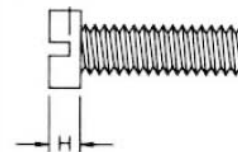
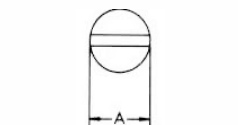
Thread Size	A	H
M2 x 0.4	3.8	1.2
M2.5 x 0.45	4.8	1.4
M3 x 0.5	5.5	1.7
M4 x 0.7	7.7	2.3
M5 x 0.8	9.4	2.8
M6 x 1.0	11.7	3.4
M8 x 1.25	16	4.7
M10 x 1.5	19	6

## Nylon Machine Screws - Cheese Slot

Hi-Q Nylon screws are tough, light, durable and corrosion resistant in normal temperatures

Part Number	Thread Size	Thread Length	Part Number	Thread Size	Thread Length
08-PNS2-10CH	M2	10	08-PNS5-20CH	M5	20
08-PNS2-12CH	M2	12	08-PNS5-25CHV	M5	25
08-PNS2-16CH	M2	16	08-PNS5-35CH	M5	35
08-PNS2.5-12CH	M2.5	12	08-PNS5-40CHV	M5	40
08-PNS2.5-20CH	M2.5	20	08-PNS6-08CH	M6	8
08-PNS3-06CH*	M3	6	08-PNS6-10CH	M6	10
08-PNS3-08CH	M3	8	08-PNS6-12CH	M6	12
08-PNS3-12CH	M3	12	08-PNS6-16CH	M6	16
08-PNS3-20CH	M3	20	08-PNS6-20CH	M6	20
08-PNS3-25CH	M3	25	08-PNS6-25CH	M6	25
08-PNS4-06CH	M4	6	08-PNS6-35CH	M6	35
08-PNS4-08CH*	M4	8	08-PNS6-40CH	M6	40
08-PNS4-10CH	M4	10	08-PNS6-50CH	M6	50
08-PNS4-12CH	M4	12	08-PNS8-16CH	M8	16
08-PNS4-16CH	M4	16	08-PNS8-20CH	M8	20
08-PNS4-20CH	M4	20	08-PNS8-25CH	M8	25
08-PNS4-25CH	M4	25	08-PNS8-30CH	M8	30
08-PNS5-06CH	M5	6	08-PNS8-35CH	M8	35
08-PNS5-10CH	M5	10	08-PNS10-35CH	M10	35
08-PNS5-12CH	M5	12			
08-PNS5-16CH	M5	16			

**Material: Nylon 6/6**  
 \* = Available in black  
 Thread sizes are in millimetres  
 More sizes available



Thread Size	A	H
M2 x 0.4	3.8	1.3
M2.5 x 0.45	4.5	1.6
M3 x 0.5	5.5	2
M4 x 0.7	7	2.6
M5 x 0.8	8.5	3.3
M6 x 1.0	10	3.9
M8 x 1.25	13	5
M10 x 1.5	15.6	6