

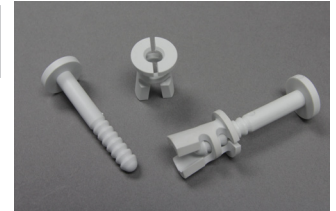
Sign Fastener Pin and Keeper

Designed for rapid assembly and disassembly of a sign or other panel to its support structure.

The sign fastener can be used to fasten two pieces together with total panel thickness of 44.5mm.

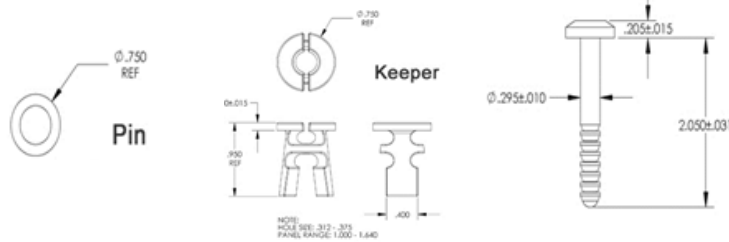
The sign fastener is designed for outdoor use.

Part Number	Description	Head Dia	Head Height	Shank Dia	Body Length
04-PPFP50	Pin	19.05	5.2	7.5	52
04-PPFK9.5	Keeper	19.05	2.5		



Material: Nylon 6/6

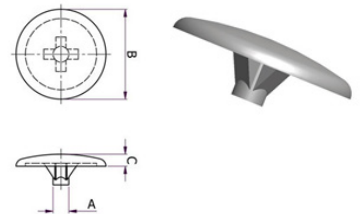
*Pin & keeper sold separately



Pozi Drive Screw Caps

Provide a quick and neat finish of screws

Part Number	Colour	Pozi Drive Screw Size	A	B	C
04-CPPD5/12BK	Black	2	5	12	1.5
04-CPPD5/12WH	White	2	5	12	1.5
04-CPPD6.5/13BK	Black	3	6.5	13	1.5
04-CPPD6.5GY	Grey	3	6.5	13	1.5
04-CPPD6.5/13WH	White	3	6.5	13	1.5

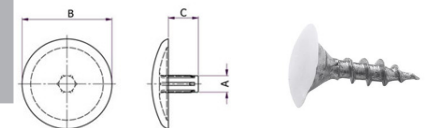


Material: LDPE

Square Drive Screw Caps

Fast and easy way to provide a neat finish on your screw

Part Number	Colour	Square Drive Screw Size	A	B	C
04-CPSD2BK	Black	2	3	12	3
04-CPSD2WH	White	2	3	12	3

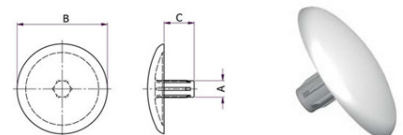


Rivet Caps

Provide a quick and neat finish of rivets and screws

Part Number	Colour	A	B	C
04-CPRC3.2/12BK	Black	3.2	12	6
04-CPRC3.2/12WH	White	3.2	12	6

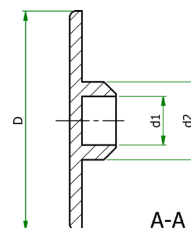
Material: LDPE



Allen Screw Cap

Covers screws to conceal and protect

Part Number	Allen Screw	D	d1	d2
14-CPAM5M	M5	17	2.8	4.3
14-CPAM6M	M6	17	3	5.2
14-CPAM8M	M8	18	4	6.2
14-CPAM10M	M10	18	6	8.4



Material: Black LDPE