

EPDM Rubber and Silicone Rubber Tapered Plugs/Stoppers

EPDM Rubber and Silicone Rubber Tapered Plugs/Stoppers

The tapered design makes them ideal for stopping liquids or gases from escaping or penetrating areas. These plugs are resistant to most of the harsh chemicals used in plating processes. Ideal choice for most masking and finishing applications.

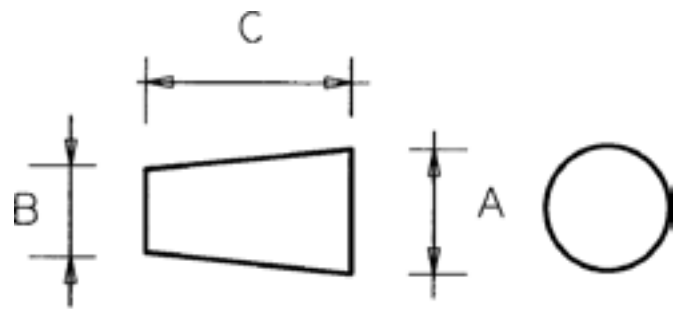
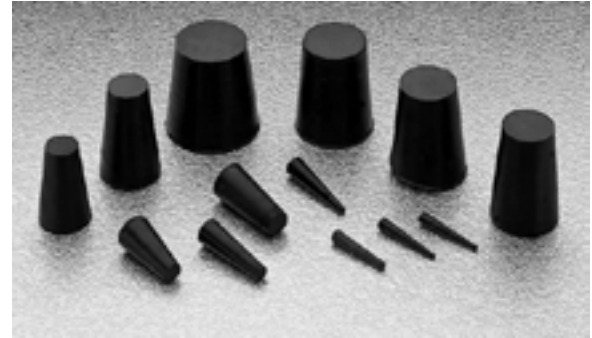
Features

Designed for painting and coating applications.

V-shaped design allows one plug to fit multiple ports.

Soft rubber material conforms to provide a tight seal.

Wide range of sizes.



EPDM Rubber Plugs have been successfully used as a low cost alternative to silicone in some powder coating applications. Withstand temperatures upto **246°C**.

Silicone Rubber Plugs give the highest temperature rating of **316°C**. Specifically designed for powder coating and E-coating applications.

Part Number	A (mm)	B (mm)	C (mm)
12-EPP02515	2.54	0.79	15.88
12-EPP03115	3.18	1.58	15.88
12-EPP05019	5.08	1.58	19.05
12-EPP06319	6.35	3.18	19.05
12-EPP08715	8.74	4.75	15.88
12-EPP09519	9.53	6.35	19.05
12-EPP12720	12.70	7.95	20.65
12-EPP15025	15.09	10.31	25.40
12-EPP16625	16.66	12.70	25.40
12-EPP19025	19.05	14.30	25.40
12-EPP19825	19.84	15.88	25.40
12-EPP23825	23.83	18.26	25.40
12-EPP27025	27.00	23.00	25.40

Part Number	A (mm)	B (mm)	C (mm)
12-SLP02525	2.54	0.79	25.40
12-SLP03115	3.18	1.58	15.88
12-SLP05019	5.08	1.58	19.05
12-SLP06319	6.35	3.18	19.05
12-SLP08715	8.74	4.75	15.88
12-SLP09519	9.53	6.35	19.05
12-SLP12720	12.70	7.95	20.65
12-SLP15025	15.09	10.31	25.40
12-SLP16625	16.66	12.70	25.40
12-SLP19025	19.05	14.30	25.40
12-SLP19825	19.84	15.88	25.40
12-SLP23825	23.83	18.26	25.40
12-SLP27025	27.00	23.00	25.40
12-SLP32025	32.00	26.01	25.40
12-SLP36025C	36.00	30.00	25.00
12-SLP50025	50.0	41.28	25.40